



Category: Monoclonal Antibodies

Product Name: Mouse Monoclonal Antibody to human Albumin

Catalog Number: MAB-606020269

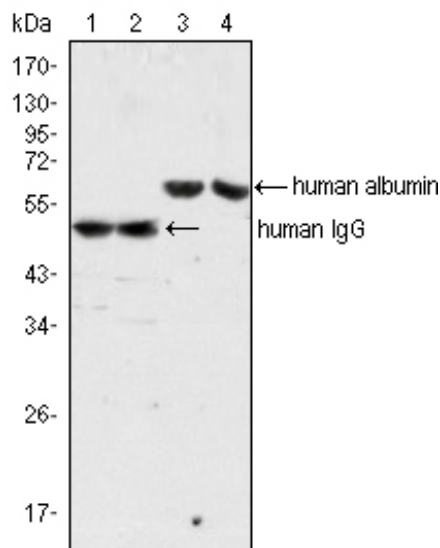


Figure 1: Western blot analysis using human Albumin mouse mAb (lane 3, 4) and human IgG mouse mAb (lane 1, 2) against human serum (lane 1, 3) and plasma (lane 2, 4).

Lot#:

Clone#: 2H3D1;8F6F9

Host and isotype: Mouse IgG1

Size: 0.1ml

MW: 69kDa

Aliases: PRO0883; PRO0903; PRO1341

Entrez Gene: 213

Species reactivity: Human

Description Albumin is a soluble, monomeric protein which comprises about one-half of the blood serum protein. Albumin functions primarily as a carrier protein for steroids, fatty acids, and thyroid hormones and plays a role in stabilizing extracellular fluid volume. Albumin is a globular unglycosylated serum protein of molecular weight 65,000. Albumin is synthesized in the liver as prealbumin which has an N-terminal peptide that is removed before the nascent protein is released from the rough endoplasmic reticulum. The product, proalbumin, is in turn cleaved in the Golgi vesicles to produce the secreted albumin.

Immunogen Human sera albumin.

Application Western Blotting: 1/500 - 1/2000.

ELISA: Proposed dilution 1/10000.

Not yet tested in other applications.

Determining optimal working dilutions by titration test.

Formulation Ascitic fluid containing 0.03% sodium azide.

Storage Store at 4°C, for long term storage, store at -20°C.

Related product 1. #20002, Mouse Monoclonal Antibody to human IgG.

References 1. Proteins. 2006 Aug 1;64(2):355-62.

2. FEBS Lett. 2007 Jul 10;581(17):3178-82.

For Research Use Only

Contact: Antagene, Inc. | Tel: 1 (866) 964-2589 | Fax: 1 (888) 225-1868 | Email: Info@antageneinc.com