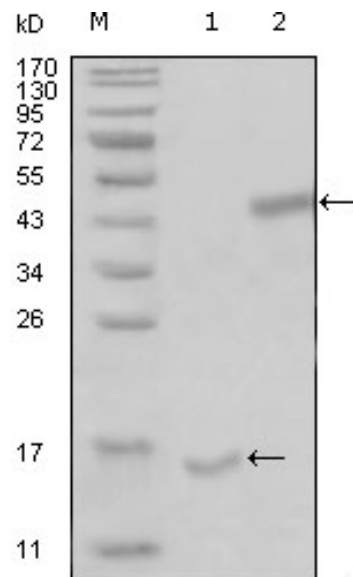




**Category:** Monoclonal Antibodies  
**Product Name:** Mouse Monoclonal Antibody to PARL

**Catalog Number:** MAB-606020241



Lot#:  
Clone#: 8C4B2;1H12E10  
Host and isotype: Mouse IgG2b  
Size: 0.1ml  
MW:  
Aliases: PSARL; PSARL1;  
RHBDS1  
Entrez Gene: 55486  
Species reactivity: Human

**Description** PARL: presenilin associated, rhomboid-like. This gene encodes a mitochondrial integral membrane protein. Following proteolytic processing of this protein, a small peptide (P-beta) is formed and translocated to the nucleus. This gene may be involved in signal transduction via regulated intramembrane proteolysis of membrane-tethered precursor proteins. Variation in this gene has been associated with increased risk for type 2 diabetes. Alternative splicing results in multiple transcript variants encoding different isoforms.

**Immunogen** Purified recombinant fragment of PARL (aa112-167) expressed in E. Coli.

**Application** Western Blotting: 1/500 - 1/2000.

ELISA: Propose dilution 1/10000.

Not yet tested in other applications.

Determining optimal working dilutions by titration test.

**Formulation** Ascitic fluid containing 0.03% sodium azide.

**Storage** Store at 4°C, for long term storage, store at -20°C.

**Related product**

**References** 1. J Alzheimers Dis. 2001 Apr;3(2):181-190.  
2. Proc Natl Acad Sci U S A. 2002 Dec 24;99(26):16899-903.  
3. Nature. 2003 May 29;423(6939):537-41.

**For Research Use Only**

**Contact:** Antagene, Inc. | Tel: 1 (866) 964-2589 | Fax: 1 (888) 225-1868 | Email: [Info@antageneinc.com](mailto:Info@antageneinc.com)