



Category: Monoclonal Antibodies

Product Name: Mouse Monoclonal Antibody to YES1

Catalog Number: MAB-606020185

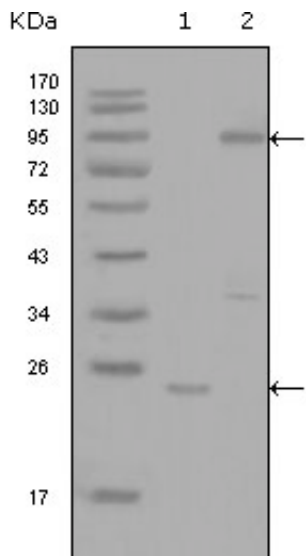


Figure 1: Western blot analysis using YES1 mouse mAb against truncated YES1-His combinant protein (1) and full-length GFP-YES1(aa1-543) transfected COS7 cell lysate (2).

Lot#:

Clone#: 2F3E6

Host and isotype: Mouse IgG1

Size: 0.1ml

MW:

Aliases: Yes; c-yes; HsT441;

P61-YES; YES1

Entrez Gene: 7525

Species reactivity: Human

Description YES1, v-yes-1 Yamaguchi sarcoma viral oncogene homolog 1. This gene is the cellular homolog of the Yamaguchi sarcoma virus oncogene. The encoded protein has tyrosine kinase activity and belongs to the src family of proteins. This gene lies in close proximity to thymidylate synthase gene on chromosome 18, and a corresponding pseudogene has been found on chromosome 22.

Immunogen Purified recombinant fragment of YES (aa10-193) expressed in E. Coli.

Application Western Blotting: 1/500 - 1/2000.

ELISA: Propose dilution 1/10000.

Not yet tested in other applications.

Determining optimal working dilutions by titration test.

Formulation Ascitic fluid containing 0.03% sodium azide.

Storage Store at 4°C, for long term storage, store at -20°C.

Related product

References 1. J Biol Chem. 2004 Jun 4;279(23):23977-87.

2. J Biol Chem. 2004 Jul 23;279(30):31590-8.

3. Nat Biotechnol. 2005 Jan;23(1):94-101.

For Research Use Only

Contact: Antagene, Inc. | Tel: 1 (866) 964-2589 | Fax: 1 (888) 225-1868 | Email: Info@antageneinc.com