



Category: Monoclonal Antibodies
Product Name: Mouse Monoclonal Antibody to RET

Catalog Number: MAB-606020169

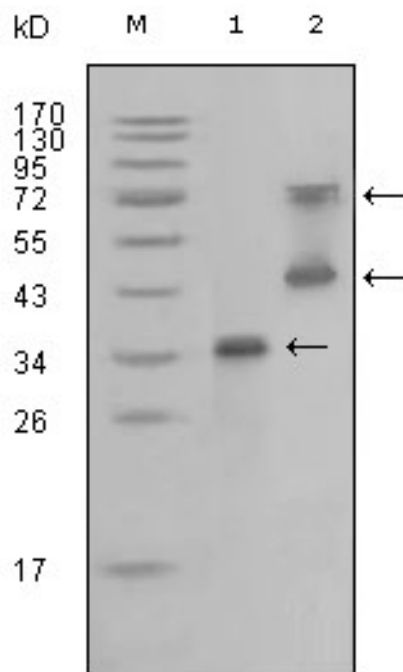


Figure 1: Western blot analysis using RET mouse mAb against truncated RET recombinant protein (1) and RET (aa658-1063)-hIgGFc transfected CHO-K1 cell lysate (2).

Lot#:
Clone#: 6E4C4
Host and isotype: Mouse IgG1
Size: 0.1ml
MW:
Aliases: RET
Entrez Gene: 5979
Species reactivity: Human

Description RET (ret proto-oncogene) is a member of the cadherin superfamily and a receptor tyrosine kinase, which are cell-surface molecules that transduce signals for cell growth and differentiation. It can undergo oncogenic activation in vivo and in vitro by cytogenetic rearrangement. Ligands that bind the Ret receptor include the glial cell line-derived neurotrophic factor (GDNF) and its congeners neurturin, persephin and artemin. Alterations in the corresponding Ret gene are associated with diseases including papillary thyroid carcinoma, multiple endocrine neoplasia (type 2A and 2B), familial medullary thyroid carcinoma and a congenital developmental disorder known as Hirschsprung disease. The Tyr905 residue located in the Ret kinase domain plays a crucial role in Ret catalytic and biological activity. Substitution of Phe for Tyr905 dramatically inhibits Ret autophosphorylation activity.

Immunogen Purified recombinant fragment of RET (aa896-1063) expressed in E. Coli.

Application Western Blotting: 1/500 - 1/2000.
ELISA: Propose dilution 1/10000.
Not yet tested in other applications.
Determining optimal working dilutions by titration test.

Formulation Ascitic fluid containing 0.03% sodium azide.

Storage Store at 4iæ, for long term storage, store at -20iæ.

Related product References 1. Young HM. Anderson RB. Anderson CR. Auton Neurosci. 2004, May 31,112(1-2):1-14.
2. Myers SM. Mulligan LM. Cancer Res. 2004, Jul 1,64(13):4453-63.

For Research Use Only

Contact: Antagene, Inc. | Tel: 1 (866) 964-2589 | Fax: 1 (888) 225-1868 | Email: Info@antageneinc.com