



**Category: Monoclonal Antibodies    Cat. #: MAB-606020158**

**Product Name: Mouse Monoclonal Antibody to BNP**

**IHC-P (paraffin)**

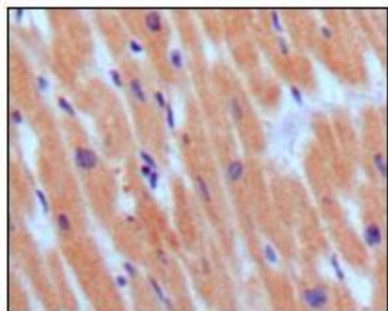


Figure 1: Immunohistochemical analysis of paraffin-embedded human normal myocardium, showing cytoplasmic localization using BNP3 mouse mAb with DAB staining.

Lot#:  
Clone#: 3A6F7C7  
Host and isotype:  
Mouse IgG1 Size: 0.1ml  
MW:  
Aliases: BNP; NPPB Entrez Gene: 4879  
Species reactivity: Human

**Description** BNP (brain natriuretic peptide) belongs to a family of structurally similar peptide hormones, which includes atrial natriuretic peptide (ANP), BNP, C-type natriuretic peptide (CNP) and urodilatin. ANP and BNP act mainly as cardiac hormones, produced primarily by the atrium and ventricle, respectively, while the gene encoding C-type natriuretic peptide is expressed mainly in the brain. BNP circulates in blood as a peptide hormone with natriuretic, vasodilatory and renin inhibitory properties. It is secreted predominantly by the left ventricular myocytes in response to volume expansion and pressure overload. These peptides are characterized by a common 17 amino acid ring structure with a disulfide bond between two cysteine residues. This ring structure shows high homology between different natriuretic.

**Immunogen** Synthetic peptide corresponding to aa (Glu-Pro-Leu-Gln-Glu-Ser-Pro-Arg-Pro-Thr-Gly-Val-Trp-Cys) of human BNP, conjugated to KLH.

**Applications** Immunohistochemistry: 1/200 - 1/1000.

ELISA: Propose dilution 1/10000.

Not yet tested in other applications.

Determining optimal working dilutions by titration test.

**Formulation** Ascitic fluid containing 0.03% sodium azide.

**Storage** Store at 4°C, for long term storage, store at -20°C.

**Related product**

**References** 1. Dawson A. Struthers AD. Expert Opin Biol Ther. 2003, Feb, 3(1):107-12. Review.  
2. Pfister R. Erdmann E. Schneider CA. Dtsch Med Wochenschr. 2003, May 2, 128(18):1007-12.

**For Research Use Only**

**Contact: Antagene, Inc. | Tel: 1 (866) 964-2589 | Fax: 1 (888) 225-1868 | Email: Info@antageneinc.com**