



Category: Monoclonal Antibodies
Product Name: Mouse Monoclonal Antibody to IKBKB

Catalog Number: MAB-606020113

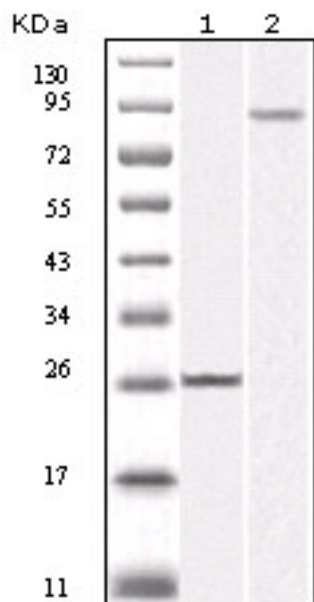


Figure 1: Western blot analysis using IKBKB mouse mAb against truncated IKBKB recombinant protein (1) and K562 cell lysate (2).

Lot#:
Clone#:
Host and isotype: Mouse IgG1
Size: 0.1ml
MW:
Aliases: IKBKB
Entrez Gene: 3551
Species reactivity: Human

Description IKBKB(Inhibitor of kappa light polypeptide gene enhancer in B-cells, kinase beta, also called IKK2/IKKB), is a member of the IKK complex which is composed of IKK-alpha, IKK-beta, IKK-gamma and IKAP. Phosphorylation of I-Kappa-B on a serine residue by the IKK complex frees NF-kB from I-Kappa-B and marks it for degradation via ubiquitination. IKK-beta has been shown to activate NF-kB and phosphorylate IKB-alpha and beta. Phosphorylation of 2 sites at the activation loop of IKK-beta is essential for activation of IKK by TNF and IL1. Once activated, IKK-beta autophosphorylates which in turn decreases IKK activity and prevents prolonged activation of the inflammatory response. Additionally, IKK-beta activity can also be regulated by MEKK-1.

Immunogen Purified recombinant fragment of IKBKB expressed in E. Coli.

Application Western Blotting: 1/500 - 1/2000.
ELISA: Propose dilution 1/10000.
Not yet tested in other applications.
Determining optimal working dilutions by titration test.

Formulation Ascitic fluid containing 0.03% sodium azide.

Storage Store at 4°C, for long term storage, store at -20°C.

Related product

References 1. Azoitei N,et al. Biochemistry. 2005.14;44(23): 8326-36.
2. Kumar KA,et al. Neurosci Lett. 2003.10;340(2): 139-42.
3. Peet GW,et al. J Biol Chem. 1999 Nov 12;274(46): 32655-61.

For Research Use Only

Contact: Antagene, Inc. | Tel: 1 (866) 964-2589 | Fax: 1 (888) 225-1868 | Email: Info@antageneinc.com