



**Category:** Monoclonal Antibodies  
**Product Name:** Mouse Monoclonal Antibody to EphB4

**Catalog Number:** MAB-606020073

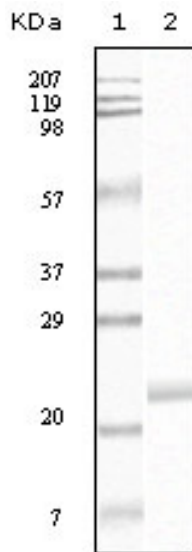


Figure 1: Western blot analysis using EphB4 mouse mAb against truncated EphB4 recombinant protein.

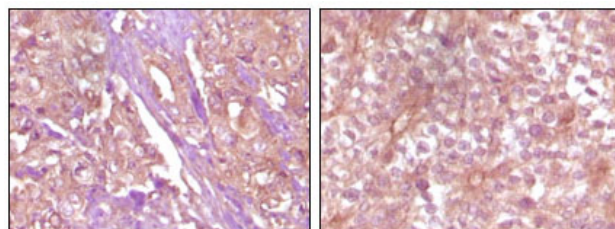


Figure 2: Immunohistochemical analysis of paraffin-embedded Human pancreas carcinoma (left) and breast carcinoma (right) tissue, showing membrane and cytoplasmic (pancreas carcinoma) localization, membrane (breast carcinoma) localization using EphB4 mouse mAb with DAB staining.

Lot#: 0601  
Clone#: 5B8F7  
Host and isotype: Mouse IgG2a  
Size: 0.1ml  
MW:  
Aliases: HTK; MYK1; TYRO11  
Entrez Gene: 2050

**Description** EPH receptor B4 (EphB4), with 987-amino acid protein (about 108kDa), belongs to the ephrin receptor subfamily of the protein-tyrosine kinase family. The Eph receptor tyrosine kinases and their ligands, the ephrins, regulate numerous biological processes in developing and adult tissues and have been implicated in cancer progression and in pathological forms of angiogenesis. EphB4 acts as a negative regulator of blood vessel branching and vascular network formation, switching the vascularization program from sprouting angiogenesis to circumferential vessel growth. EphB4 and its ligand ephrinB2 express in several kinds of tumor cells and correlate with tumorigenesis. EphB4 is thus a potential candidate as a predictor of disease outcome in several kinds of tumor and as target for novel therapy.

**Immunogen** Purified recombinant fragment of EphB4 expressed in E. Coli.

**Application** Western Blotting: 1/500 - 1/2000.

Immunohistochemistry: 1/200 - 1/1000.

ELISA: Propose dilution 1/10000.

Not yet tested in other applications.

Determining optimal working dilutions by titration test.

**Formulation** Ascitic fluid containing 0.03% sodium azide.

**Storage** Store at 4°C, for long term storage, store at -20°C.

#### Related product

**References** 1. J. Chrencik, A. Brooun, M. Recht. Structure. 2006 Feb;14(2):321-30.  
2. Qinghua WU, Zhenhe SUO, Bjorn RISBERG. Pathol Oncol Res. 2004;10(1):26-33.

**For Research Use Only**

**Contact:** Antagene, Inc. | Tel: 1 (866) 964-2589 | Fax: 1 (888) 225-1868 | Email: [Info@antageneinc.com](mailto:Info@antageneinc.com)