



**Category:** Monoclonal Antibodies

**Product Name:** Mouse Monoclonal Antibody to EphA2

**Catalog Number:** MAB-606020071

KDa 1 2

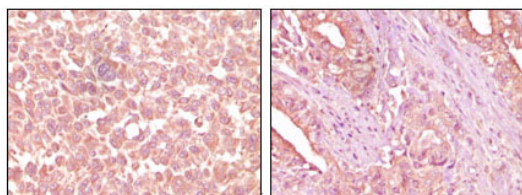
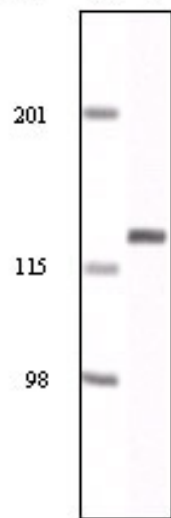


Figure 2: Immunohistochemical analysis of paraffin-embedded human skin carcinoma (left) and pancreas carcinoma (right) tissue, showing cytoplasmic localization using EphA2 mouse mAb with DAB staining.

Lot#: 0601

Clone#: 1B3C7

Host and isotype: Mouse IgM

Size: 0.1ml

MW:

Aliases: ECK; EPHA2

Entrez Gene: 1969

Species reactivity: Human

Figure 1: Western blot analysis using EphA2 mouse mAb against NIH/3T3 cell lysate.

**Description** EPH receptor A2 (EphA2), with 976-amino acid protein (about 107 kDa), belongs to the ephrin receptor subfamily of the protein-tyrosine kinase family. EphA1, EphA2, EphA3, EphA4, EphA5, EphA6, EphA7, EphA8, EphA10, EphB1, EphB2, EphB3, EphB4 and EphB6 are Eph family receptors for Ephrin family ligands. In normal cells, EphA2 negatively regulates cell growth and invasiveness. EphA2 is overexpressed by many human cancers, and is often associated with poor prognostic features. The clinical significance of the expression of EphA2 was observed in breast, prostate, colon, skin, cervical, ovarian, and lung cancers. EphA2 may serve as a novel target for bladder cancer, colonic adenocarcinoma and ovarian cancer therapy.

**Immunogen** Purified recombinant fragment of EphA2 expressed in E. Coli.

**Application** Western Blotting: 1/500 - 1/2000.

Immunohistochemistry: 1/200 - 1/1000.

ELISA: Propose dilution 1/10000.

Not yet tested in other applications.

Determining optimal working dilutions by titration test.

**Formulation** Ascitic fluid containing 0.03% sodium azide.

**Storage** Store at 4°C, for long term storage, store at -20°C.

#### Related product

**References** 1. Shaji Abraham, Deborah W. Knapp, Liang Cheng. Clin Cancer Res. 2006 Jan 15;12(2):353-60.  
2. Charles N Landen, Michael S Kinch, Anil K Sood. Expert Opin Ther Targets. 2005 Dec;9(6):1179-87.

**For Research Use Only**

**Contact:** Antagene, Inc. | Tel: 1 (866) 964-2589 | Fax: 1 (888) 225-1868 | Email: [Info@antageneinc.com](mailto:Info@antageneinc.com)