



Category: Monoclonal Antibodies
Product Name: Mouse Monoclonal Antibody to EphB6

Catalog Number: MAB-606020063

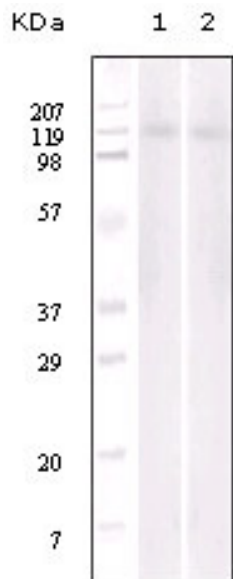


Figure 1: Western blot analysis of Jurkat (1) and NIH/3T3 (2) cell lysate using EphB6 mouse mAb.

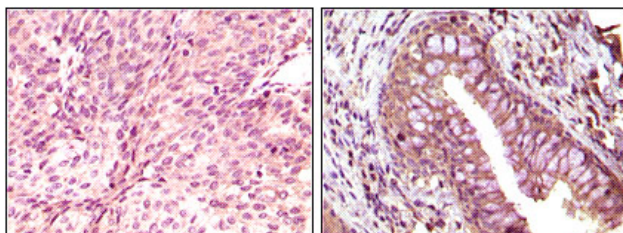


Figure 2: Immunohistochemical analysis of paraffin-embedded human bladder carcinoma (left) and return carcinoma (right) tissue, showing cytoplasmic localization using EphB6 mouse mAb with DAB staining.

Lot#: 0601
Clone#: 8E7H12
Host and isotype: Mouse IgG1
Size: 0.1mg
MW:
Aliases: HEP; MGC129910;
MGC129911
Entrez Gene: 2051
Species reactivity: Human

Description EPH receptor B6 (EphB6), with 1006-amino acid protein (~ 110 kDa), belongs to the ephrin receptor subfamily of the protein-tyrosine kinase family. Eph receptors and ephrin ligands are membrane-bound cell-cell communication molecules with well-defined functions in development. EphB6 is expressed both in a variety of embryonic and adult tissues. EphB6 is a unique member in the Eph family of receptor tyrosine kinases in that its kinase domain contains several alterations in conserved amino acids and is catalytically inactive. EphB6 can both positively and negatively regulate cell adhesion and migration and tyrosine phosphorylation of the receptor by an Src family kinase acts as the molecular switch for the functional transition.

Immunogen Purified recombinant fragment of EphB6 expressed in E. Coli.

Application Western Blotting: 1/500 - 1/2000.

Immunohistochemistry: 1/200 - 1/1000.

ELISA: Propose dilution 1/10000.

Not yet tested in other applications.

Determining optimal working dilutions by titration test.

Formulation Purified antibody in PBS containing 0.03% sodium azide.

Storage Store at 4°C, for long term storage, store at -20°C.

Related product

References 1. Kazushige Ogawa, Hiroki Wada, Noriyoshi Okada J Cell Sci. 2006 Feb 1;119(Pt 3):559-70.
2. Hiroshi Matsuoka, Hiroya Obama, Meghan L. Kelly J Biol Chem. 2005 Aug 12;280(32):29355-63.

For Research Use Only

Contact: Antagene, Inc. | Tel: 1 (866) 964-2589 | Fax: 1 (888) 225-1868 | Email: Info@antageneinc.com