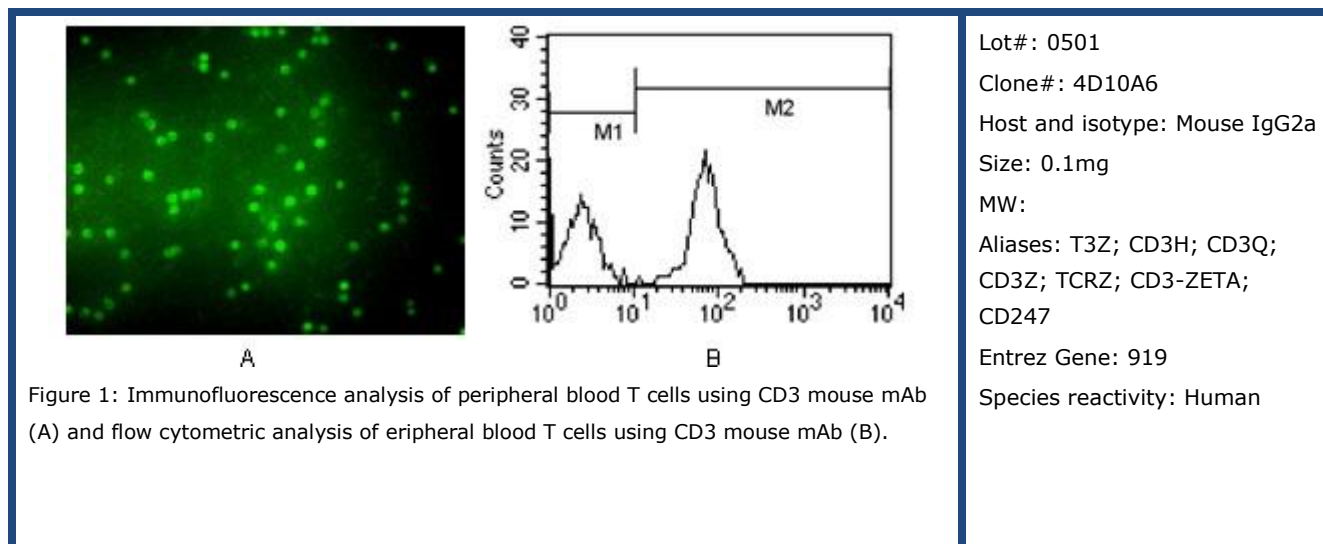




Category: Monoclonal Antibodies Cat. #: MAB-606020037
Product Name: FITC labeled Mouse Monoclonal Antibody to CD3



Description

CD3 is a component of T cell surface receptor (TCR), it contains 5 invariable chains: gamma-, delta-, epsilon-, and zeta/eta. Clevers et al. (1988) showed the TCR/CD3 complex consists of either a TCR alpha/beta or TCR gamma/delta heterodimer coexpressed at the cell surface with the invariant subunits. CD3 is responsible for the signal transduction of the TCR.

Immunogen

Purified recombinant fragment of human CD3 expressed in E. Coli.

Application

Immunofluorescence: 1/200 - 1/1000.

ELISA: Propose dilution 1/10000.

Not yet tested in other applications.

Determining optimal working dilutions by titration test.

Formulation

Purified antibody in PBS containing 0.03% sodium azide.

Storage

Store at 4°C, for long term storage, store at -20°C.

Related product

References

1. Clevers, H. Annu. Rev. 1988. Immun. 6: 629-662.

For Research Use Only

Contact: Antagene, Inc. | Tel: 1 (866) 964-2589 | Fax: 1 (888) 225-1868 | Email: Info@antageneinc.com