



Category: Monoclonal Antibodies

Product Name: Mouse Monoclonal Antibody to KSHV ORF26

Catalog Number: MAB-606020036

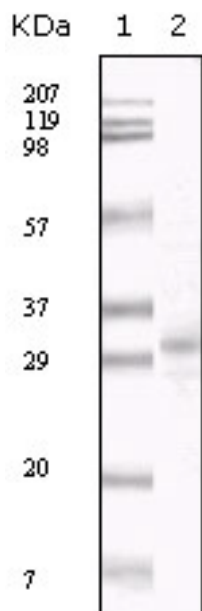


Figure 1: Western blot analysis using KSHV ORF26 mouse mAb against TPA induced BCBL-1 cell lysate.

Lot#: 0501

Clone#: 2F6B8

Host and isotype: Mouse IgG1

Size: 0.1ml

MW:

Aliases: ORF26

Entrez Gene: 4961509

Description Kaposi's sarcoma-associated herpesvirus (KSHV) belongs to the gamma-(2)-herpesvirus subfamily and has been closely linked to the Kaposi's sarcoma, primary effusion lymphoma (PEL) and multicentric Castlemann's disease. The genome of KSHV is 165-170 kb and contains at least 88 open reading frames. KSHV ORF26 open reading frames are juxtaposed and span from nucleotide (nt) 46933 to 47850 of the virus genome. Akula et al (2003) report it acts as a Capsid protein.

Immunogen Purified recombinant fragment of KSHV ORF26 expressed in E. Coli.

Application Western Blotting: 1/500 - 1/2000.

ELISA: Propose dilution 1/10000.

Not yet tested in other applications.

Determining optimal working dilutions by titration test.

Formulation Ascitic fluid containing 0.03% sodium azide.

Storage Store at 4°C, for long term storage, store at -20°C.

Related product

References 1. James J . Proc. Natl. Acad. Sci Vol. 1996. 93, pp. 14862-14867.

For Research Use Only

Contact: Antagene, Inc. | Tel: 1 (866) 964-2589 | Fax: 1 (888) 225-1868 | Email: Info@antageneinc.com