



Category: Monoclonal Antibodies Cat. #: MAB-606020029
Product Name: Mouse Monoclonal Antibody to

Western Blotting

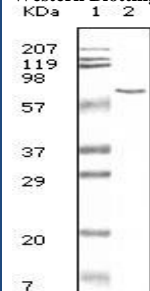


Figure 1: Western blot analysis using BSA mouse mAb antibody against BSA.

Lot#: 0501
Clone#: 3H6
Host and isotype: Mouse IgG1
Size: 0.1mg
MW:
Aliases:
Entrez Gene:
Species reactivity: Bovine

Description

Bovine serum albumin (BSA) is used in variety of laboratories products which contain BSA as a stabilizer. BSA could be detected for the indication of remains of chemical derivatives from animal products. This antibody is a good reagent that may be used for the development of detection assay in ELISA or western blot to test the remaining BSA for clinical products in Vivo or research products In Vitro.

Immunogen

Bovine serum albumin.

Applications

Western Blotting: 1/500 - 1/2000.

ELISA: Proposed dilution 1/10000.

Not yet tested in other applications.

Determining optimal working dilutions by titration test.

Formulation

Purified antibody in PBS containing 0.03% sodium azide.

Storage

Store at 4°C, for long term storage, store at -20°C.

Related product

References

1. Clin Chem 1997;43 (7): 1142-1150.
2. Science 1994;263: 1625-1629.
3. Nature 1994;367: 417-418.

For Research Use Only

Contact: Antagene, Inc. | Tel: 1 (866) 964-2589 | Fax: 1 (888) 225-1868 | Email: Info@antageneinc.com