



## Product Information Sheet

### Monoclonal Anti-Vimentin (Magnetic Bead conjugate)

**Catalogue No.** MA1102-M

**Lot No.** 08A12

**Clone:** VMT-24

**Ig type:** mouse IgG1

**Size:** 200µl

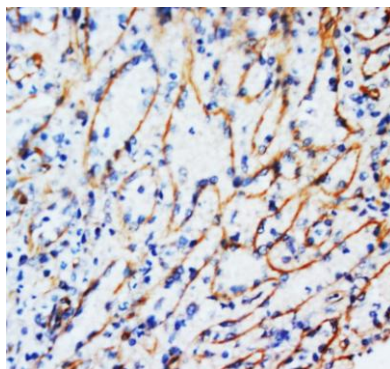
**Specificity**

Human, rat.

No cross reactivity with other proteins.

**Recommended application**

*Immunoprecipitation(IP)*



**Immunogen**

Pig eye lens vimentin.

**Purification**

Purified by the goat anti-mouse IgG affinity chromatography.

**Formulation**

Each vial contains 1mg/ml Magnetic Bead in PBS, pH 7.2, 0.05mg NaN<sub>3</sub>.

**Storage**

Store at 4°C for frequent use.

**Description**

This Antagene antibody is immobilized by the covalent reaction of hydrazinonicotinamide-modified antibody with formylbenzamide-modified beads. It is useful for immunoprecipitation.

#### BACKGROUND

The VIM gene was one of many that Gieser and Swaroop (1992) recovered from a subtracted cDNA library for retinal pigment epithelium. Vimentin gene express in human lymphocytes and in Burkitt's lymphoma cells. Vimentin is secreted by activated macrophages. The gene encoding human vimentin is located on the short arm of chromosome 10.

#### REFERENCE

1. Lilienbaum, A.; Legagneux, V.; Portier, M.-M.; Dellagi, K.; Paulin, D. : Vimentin gene: expression in human lymphocytes and in Burkitt's lymphoma cells. EMBO J. 5: 2809-2814, 1986.
2. Mor-Vaknin, N.; Punturieri, A.; Sitwala, K.; Markovitz, D. M. : Vimentin is secreted by activated macrophages. Nature Cell Biol. 5: 59-63, 2003
- 3 Ferrari, S.; Cannizzaro, L. A.; Battini, R.; Huebner, K.; Baserga, R. : The gene encoding human vimentin is located on the short arm of chromosome 10. Am. J. Hum. Genet. 41: 616-626, 1987.

**For Research Use Only not for diagnostic and clinical use**

**Contact:** Antagene, Inc. | Tel: 1 (866) 964-2589 | Fax: 1 (888) 225-1868 | Email: [Info@antageneinc.com](mailto:Info@antageneinc.com)