



Product Information Sheet

Monoclonal Anti-Tryptophan Hydroxylase, - conjugated to Magnetic Beads

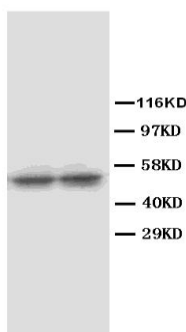
Catalogue No. MA1099-M

Lot No. 08A12

Clone: Try-63

Ig type: mouse IgG3

Size: 200µl



Lane 1 : Rat brain tissue Lysate
Lane 2 : Rat brain tissue Lysate

Specificity

Human, rat, rabbit.

No cross reactivity with other proteins.

Recommended application

Immunoprecipitation(IP)

Immunogen

Recombinant rabbit tryptophan hydroxylase.

Purification

Purified by the goat anti-mouse IgG affinity chromatography.

Formulation

Each vial contains 1mg/ml Magnetic Bead in PBS, pH 7.2, 0.05mg NaN₃.

Storage

Store at 4°C for frequent use.

Description

This Antagene antibody is immobilized by the covalent reaction of hydrazinonicotinamide-modified antibody with formylbenzamide-modified beads. It is useful for immunoprecipitation.

BACKGROUND

Tryptophan hydroxylase is the rate-limiting enzyme in the synthesis of serotonin (5-hydroxytryptamine, or 5HT). Tryptophan hydroxylase catalyzes the bipterin-dependent monooxygenation of tryptophan to 5-hydroxytryptophan (5HT), which is subsequently decarboxylated to form the neurotransmitter serotonin. Human tryptophan hydroxylase (TPH) is mapped to chromosome 11p15.3-p14 by in situ hybridization.

REFERENCE

- 1 Craig, S. P.; Boularand, S.; Darmon, M. C.; Mallet, J.; Craig, I. W. : Localization of human tryptophan hydroxylase (TPH) to chromosome 11p15.3-p14 by in situ hybridization. *Cytogenet. Cell Genet.* 56: 157-159, 1991.
- 2 Nielsen, D. A.; Dean, M.; Goldman, D. : Genetic mapping of the human tryptophan hydroxylase gene on chromosome 11, using an intronic conformational polymorphism. *Am. J. Hum. Genet.* 51: 1366-1371, 1992.

For Research Use Only not for diagnostic and clinical use

Contact: Antagene, Inc. | Tel: 1 (866) 964-2589 | Fax: 1 (888) 225-1868 | Email: Info@antageneinc.com