



Product Information Sheet

Monoclonal Anti-Synaptophysin- Magnetic Bead Conjugate

Catalogue No. MA1091-M

Lot No. 08A12

Clone: Syn-58

Ig type: mouse IgG1

Size: 200µl

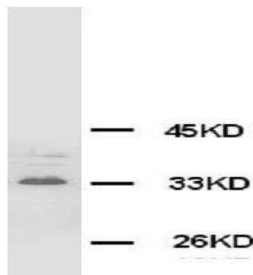
Specificity

Rat.

No cross reactivity with other proteins.

Recommended application

Immunoprecipitation(IP)



Immunogen

Rat retina synaptosome.

Purification

Purified by the goat anti-mouse IgG affinity chromatography.

Formulation

Each vial contains 1mg/ml Magnetic Bead in PBS, pH 7.2, 0.05mg NaN₃.

Storage

Store at 4°C for frequent use.

Description

This Antagene antibody is immobilized by the covalent reaction of hydrazinonicotinamide-modified antibody with formylbenzamide-modified beads. It is useful for immunoprecipitation.

BACKGROUND

Synaptophysin (SYP) is an integral membrane protein of small synaptic vesicles in brain and endocrine cells. Ozcelik et al. (1990) concluded that the gene has 7 exons distributed over about 20 kb. SYP mapped the SYP locus to Xp11.23-p11.22. Regionalization of the gene on the X chromosome was also done with hamster/human hybrid cells in which various portions of the human X chromosome were present.

REFERENCE

- 1 McMahon, H. T.; Bolshakov, V. Y.; Janz, R.; Hammer, R. E.; Siegelbaum, S. A.; Sudhof, T. C. : Synaptophysin, a major synaptic vesicle protein, is not essential for neurotransmitter release. *Proc. Nat. Acad. Sci.* 93: 4760-4764, 1996.
- 2 Cremin, S. M.; Greer, W. L.; Bodok-Nutzati, R.; Schwartz, M.; Peacocke, M.; Siminovitch, K. A. : Linkage of Wiskott-Aldrich syndrome with three marker loci, DXS426, SYP and TFE3, which map to the Xp11.3-p11.22 region. *Hum. Genet.* 92: 250-253, 1993.
- 3 Ozcelik, T.; Lafreniere, R. G.; Archer, B. T., III; Johnston, P. A.; Willard, H. F.; Francke, U.; Sudhof, T. C. : Synaptophysin: structure of the human gene and assignment to the X chromosome in man and mouse. *Am. J. Hum. Genet.* 47: 551-561, 1990.

For Research Use Only not for diagnostic and clinical use

Contact: Antagene, Inc. | Tel: 1 (866) 964-2589 | Fax: 1 (888) 225-1868 | Email: Info@antageneinc.com