



Product Information Sheet

Monoclonal Anti-Myosin (Skeletal, Slow)

Catalogue No. MA1064-M

Lot No. 08A12

Clone: IML-64

Ig type: mouse IgG1

Size: 100µg/vial

Specificity

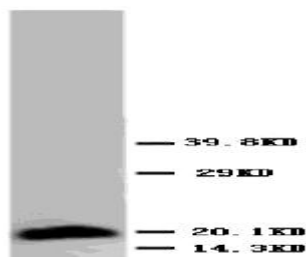
Human, rat.

No cross reactivity with other proteins.

Recommended application

Western blot

Immunohistochemistry(P)



Immunogen

Human skeletal muscle myosin purified from myofibrils

Purification

Purified by the goat anti-mouse IgG affinity chromatography.

Formulation

Each vial contains 1mg/ml Magnetic Bead in PBS, pH 7.2, 0.05mg NaN₃.

Storage

Store at 4°C for frequent use.

Description

This Antagene antibody is immobilized by the covalent reaction of hydrazinonicotinamide-modified antibody with formylbenzamide-modified beads. It is useful for immunoprecipitation.

BACKGROUND

Myosin is composed of 2 heavy chains of about 200,000 daltons each and 4 light chains of about 20,000 daltons each. Skeletal Myosin (slow),, also known as light chain 3(MYL3), mapped to 3p. Fodor et al. (1989) found that the MYL3 gene has 7 exons, the last of which is completely untranslated 3-prime sequence.

REFERENCE

1. Darras, B. T.; Fodor, B.; Vanin, E.; Francke, U. : A human myosin alkali light chain gene mapped to chromosome 3. (Abstract) Cytogenet. Cell Genet. 46: 603, 1987
2. Fodor, W. L.; Darras, B.; Seharaseyon, J.; Falkenthal, S.; Francke, U.; Vanin, E. F. : Human ventricular/slow twitch myosin alkali light chain gene characterization, sequence, and chromosomal location. J. Biol. Chem. 264: 2143-2149, 1989.

FOR RESEARCH USE ONLY. NOT FOR DIAGNOSTIC AND CLINICAL USE.

FOR RESEARCH USE ONLY. NOT FOR DIAGNOSTIC AND CLINICAL USE.