



## Product Information Sheet

### Monoclonal Anti-Myosin (Skeletal, Fast)

**Catalogue No.** MA1063

**Lot No.** 08A12

**Clone:** MY-38

**Ig type:** mouse IgG1

**Size:** 100µg/vial

#### Specificity

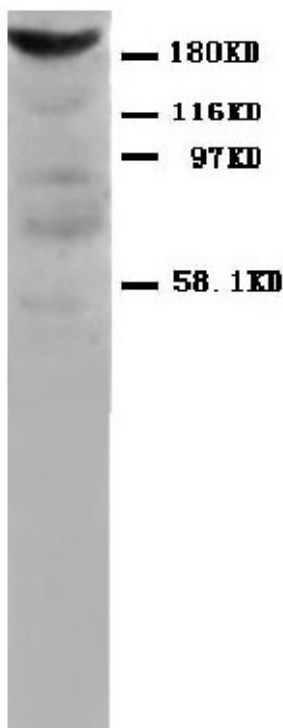
Human, rat.

No cross reactivity with other proteins.

#### Recommended application

*Western blot*

*Immunohistochemistry(P)*



#### Purification

Purified by the goat anti-mouse IgG affinity chromatography.

#### Application

*Western blot*

At 1-2µg/ml with the appropriate system to detect myosin(skeletal, fast) in cells and tissues.

*Immunohistochemistry(P)*

At 1.5-2µg/ml to detect myosin(skeletal, fast) in formalin fixed and paraffin embedded tissues.

*Other applications have not been tested.*

*Optimal dilutions should be determined by end user.*

#### Formulation

Lyophilized from 1.2% sodium acetate, with 2mg BSA and 0.01mg NaN<sub>3</sub> as preservative.

#### Immunogen

Rabbit muscle myosin.

To reorder contact us at:

**Antagene, Inc.**

**Toll Free: 1(866)964-2589**

**email: Info@antageneinc.com**

**FOR RESEARCH USE ONLY. NOT FOR DIAGNOSTIC AND CLINICAL USE.**

**Reconstitution**

1.2% sodium acetate or neutral PBS. If 1ml of PBS is used, the antibody concentration will be 100µg/ml.

**Storage**

At -20°C for one year. After reconstitution, at 4°C for three month. It can also be aliquotted and stored frozen at -20°C for longer time.

**BACKGROUND**

Myosin is composed of 2 heavy chains of about 200,000 daltons each and 4 light chains of about 20,000 daltons each. The light chains are of 2 distinct types: the phosphorylatable, regulatory, or MLC2 type, and the nonphosphorylatable, alkali, or MLC1 and MLC3 types (MYL1 according to the HGM symbols). Skeletal Myosin(Fast),, also known as MYL1, mapped to the region 2q32.1-qter.

**REFERENCE**

1. Cohen-Haguenauer, O.; Barton, P. J. R.; Van Cong, N.; Serero, S.; Gross, M.-S.; Jegou-Foubert, C.; de Tand, M.-F.; Robert, B.; Buckingham, M.; Frezal, J. : Assignment of the human fast skeletal muscle myosin alkali light chains gene (MLC1F/MLC3F) to 2q32.1-2qter. Hum. Genet. 78: 65-70, 1988.
2. Serero, S.; Barton, P.; Van Cong, N.; Cohen-Haguenauer, O.; Robert, B.; Buckingham, M.; Frezal, J. : Assignment of the human fast skeletal muscle myosin alkali light chains gene (MLC1F/MLC3F) to 2q32.1-2qter. (Abstract) Cytogenet. Cell Genet. 46: 690 only, 1987.