



Product Information Sheet

Monoclonal Anti-Myosin (Skeletal, Fast)

Catalogue No. MA1063-M

Lot No. 08A12

Clone: MY-38

Ig type: mouse IgG1

Size: 200µl

Specificity

Human, rat.

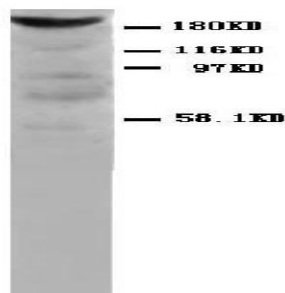
No cross reactivity with other proteins.

Recommended application

Immunoprecipitation(IP)

Storage

Store at 4°C for frequent use.



Immunogen

Rabbit muscle myosin.

Purification

Purified by the goat anti-mouse IgG affinity chromatography.

Formulation

Each vial contains 1mg/ml Magnetic Bead in PBS, pH 7.2, 0.05mg NaN₃.

Description

This Antagene antibody is immobilized by the covalent reaction of hydrazinonicotinamide-modified antibody with formylbenzamide-modified beads. It is useful for immunoprecipitation.

BACKGROUND

Myosin is composed of 2 heavy chains of about 200,000 daltons each and 4 light chains of about 20,000 daltons each. The light chains are of 2 distinct types: the phosphorylatable, regulatory, or MLC2 type, and the nonphosphorylatable, alkali, or MLC1 and MLC3 types (MYL1 according to the HGM symbols). Skeletal Myosin(Fast), also known as MYL1, mapped to the region 2q32.1-qter.

REFERENCE

1. Cohen-Haguenauer, O.; Barton, P. J. R.; Van Cong, N.; Serero, S.; Gross, M.-S.; Jegou-Foubert, C.; de Tand, M.-F.; Robert, B.; Buckingham, M.; Frezal, J. : Assignment of the human fast skeletal muscle myosin alkali light chains gene (MLC1F/MLC3F) to 2q32.1-2qter. Hum. Genet. 78: 65-70, 1988.
2. Serero, S.; Barton, P.; Van Cong, N.; Cohen-Haguenauer, O.; Robert, B.; Buckingham, M.; Frezal, J. : Assignment of the human fast skeletal muscle myosin alkali light chains gene (MLC1F/MLC3F) to 2q32.1-2qter. (Abstract) Cytogenet. Cell Genet. 46: 690 only, 1987.

FOR RESEARCH USE ONLY. NOT FOR DIAGNOSTIC AND CLINICAL USE.