



Product Information Sheet

Monoclonal Anti-MAP2- Magnetic Bead Conjugate

Catalogue No. MA1057-M

Lot No. 08A12

Clone: MP-2

Ig type: mouse IgG1

Size: 200µl

Specificity

Human, rat, mouse

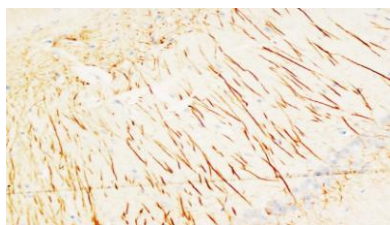
No cross reactivity with other proteins.

Recommended application

Immunoprecipitation(IP)

Storage

Store at 4°C for frequent use.



Immunogen

Rat brain microtubule-associated proteins (MAPs)

Purification

Purified by the goat anti-mouse IgG affinity chromatography.

Formulation

Each vial contains 1mg/ml Magnetic Bead in PBS, pH 7.2, 0.05mg NaN₃.

Description

This Antagene antibody is immobilized by the covalent reaction of hydrazinonicotinamide-modified antibody with formylbenzamide-modified beads. It is useful for immunoprecipitation.

BACKGROUND

MAP2, a 280-kD protein, is highly concentrated in neuronal somata and dendrites. Microtubule-associated protein 2 (MAP2) is a neurosteroid receptor. MAP2 gene contains 19 exons, and located in segment 2q34-q35. The transgenic MAP2c was present in dendrites but not in axons but transgenic MAP2c messenger RNA was limited to cell bodies.

REFERENCE

- 1 Fontaine-Lenoir, V.; Chambrud, B.; Fellous, A.; David, S.; Duchossoy, Y.; Baulieu, E.-E.; Robel, P. : Microtubule-associated protein 2 (MAP2) is a neurosteroid receptor. *Proc. Nat. Acad. Sci.* 103: 4711-4716, 2006.
- 2 Neve, R. L.; Harris, P.; Kosik, K. S.; Kurnit, D. M.; Donlon, T. A. : Identification of cDNA clones for the human microtubule-associated protein tau and chromosomal localization of the genes for tau and microtubule-associated protein 2. *Molec. Brain Res.* 1: 271-280, 1986.
- 3 Kalcheva, N.; Albala, J.; O'Guin, K.; Rubino, H.; Garner, C.; Shafit-Zagardo, B. : Genomic structure of human microtubule-associated protein 2 (MAP-2) and characterization of additional MAP-2 isoforms. *Proc. Nat. Acad. Sci.* 92: 10894-10898, 1995.

FOR RESEARCH USE ONLY. NOT FOR DIAGNOSTIC AND CLINICAL USE.