



Product Information Sheet

Monoclonal Anti-Glucagon

Catalogue No. MA1047

Lot No. 08A12

Clone: IMD-7

Ig type: mouse IgG1

Size: 100µg/vial

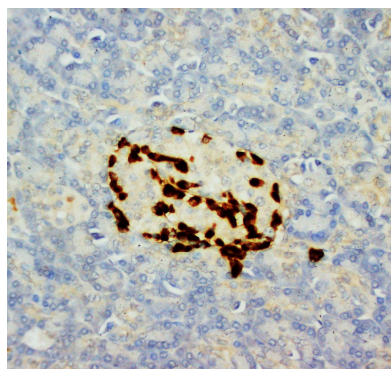
Specificity

Human, rat.

No cross reactivity with other proteins.

Recommended application

Immunohistochemistry(P)



Immunogen

Polymerized porcine glucagon.

Purification

Purified by the goat anti-mouse IgG affinity chromatography.

Application

Immunohistochemistry(P)

At 1-2µg/ml to detect glucagon in formalin fixed and paraffin embedded tissues.

Other applications have not been tested.

Optimal dilutions should be determined by end user.

Formulation

Lyophilized from 1.2% sodium acetate, with 2mg BSA and 0.01mg NaN₃ as preservative.

Reconstitution

1.2% sodium acetate or neutral PBS. If 1ml of PBS is used, the antibody concentration will be 100µg/ml.

Storage

At -20°C for one year. After reconstitution, at 4°C for three month. It can also be aliquotted and stored frozen at -20°C for longer time.

To reorder contact us at:
Antagene, Inc.
Toll Free: 1(866)964-2589
email: Info@antageneinc.com

BACKGROUND

Glucagon is a member of a multigene family that includes secretin. Glucagon is a 29-amino acid pancreatic hormone that counteracts the glucose-lowering action of insulin by stimulating glycogenolysis and gluconeogenesis. the human glucagon gene is approximately 9.4 kb long and contains 6 exons and 5 introns, and assigned to 2q36-2q37.

REFERENCE

- 1 Schroeder, W. T.; Lopez, L. C.; Harper, M. E.; Saunders, G. F. : *Localization of the human glucagon gene (GCG) to chromosome segment 2q36-37. Cytogenet. Cell Genet.* 38: 76-79, 1984.
- 2 White, J. W.; Saunders, G. F. : *Structure of the human glucagon gene. Nucleic Acids Res.* 14: 4719-4730, 1986.