



Product Information Sheet

Monoclonal Anti-Cytokeratin Peptide 4 - conjugated to Magnetic Beads

Catalogue No. MA1027-M

Lot No. 08A12

Clone: CK-4

Ig type: mouse IgG1

Size: 200µl

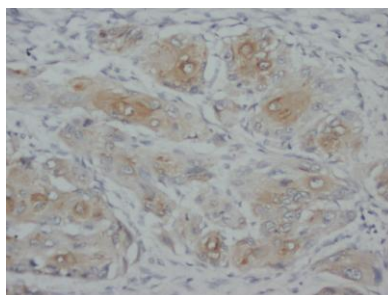
Specificity

Human, rat.

No cross reactivity with other proteins.

Recommended application

Immunoprecipitation(IP)



Immunogen

Cytokeratin from human esophagus.

Purification

Purified by the goat anti-mouse IgG affinity chromatography.

Formulation

Each vial contains 1mg/ml Magnetic Bead in PBS, pH 7.2, 0.05mg NaN_3 .

Storage

Store at 4°C for frequent use.

Description

This Antagene antibody is immobilized by the covalent reaction of hydrazinonicotinamide-modified antibody with formylbenzamide-modified beads. It is useful for immunoprecipitation.

BACKGROUND

Cytokeratins are a subfamily of intermediate filament proteins and are characterized by a remarkable biochemical diversity, represented in human epithelial tissues by at least 20 different polypeptides. They range in molecular weight between 40 kDa and 68 kDa and isoelectric pH between 4.9 – 7.8. The cytokeratin antibodies are not only of assistance in the differential diagnosis of tumors using immunohistochemistry on tissue sections, but are also a useful tool in cytopathology and flow cytometric assays.

REFERENCE

- 1 Fuchs, E. : Keratins as biochemical markers of epithelial differentiation. *Trends Genet.* 4: 277-281, 1988.
- 2 Mischke, D.; Wille, G.; Wild, A. G. : Allele frequencies and segregation of human polymorphic keratins K4 and K5. *Am. J. Hum. Genet.* 46: 548-552, 1990.

For Research Use Only not for diagnostic and clinical use

Contact: Antagene, Inc. | Tel: 1 (866) 964-2589 | Fax: 1 (888) 225-1868 | Email: Info@antageneinc.com