



Product Information Sheet

Monoclonal Anti-Cytokeratin Peptide 13 - conjugated to Magnetic Beads

Catalogue No. MA1025-M

Lot No. 08A12

Clone: CK-13

Ig type: mouse IgG1

Size: 200µl

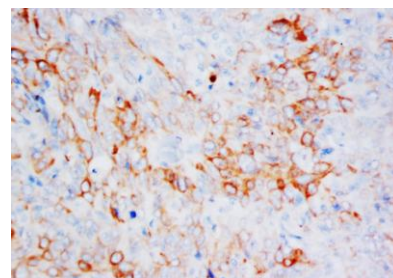
Specificity

Human.

No cross reactivity with other proteins.

Recommended application

Immunoprecipitation(IP)



Immunogen

The cultured human epidermoid carcinoma cell line A-431.

Purification

Purified by the goat anti-mouse IgG affinity chromatography.

Formulation

Each vial contains 1mg/ml Magnetic Bead in PBS, pH 7.2, 0.05mg NaN_3 .

Storage

Store at 4°C for frequent use.

Description

This Antagene antibody is immobilized by the covalent reaction of hydrazinonicotinamide-modified antibody with formylbenzamide-modified beads. It is useful for immunoprecipitation.

BACKGROUND

Cytokeratin 13 is a member of the keratin gene family. The keratins are intermediate filament proteins responsible for the structural integrity of epithelial cells and are subdivided into cytokeratins and hair keratins. Most of the type I cytokeratins consist of acidic proteins which are arranged in pairs of heterotypic keratin chains. Cytokeratin 13 was mapped to chromosome 17 by PCR amplification with cytokeratin 13-specific DNA antimers of a human-hamster somatic cell hybrid DNA panel.

REFERENCE

Romano, V.; Bosco, P.; Raimondi, E.; Feo, S.; Leube, R.; Franke, W.; Ceratto, N. : *Chromosomal mapping and physical linkage analysis of human acidic cytokeratin genes. (Abstract) Cytogenet. Cell Genet.* 58: 2009-2010, 1991.

For Research Use Only not for diagnostic and clinical use

Contact: Antagene, Inc. | Tel: 1 (866) 964-2589 | Fax: 1 (888) 225-1868 | Email: Info@antageneinc.com

For Research Use Only not for diagnostic and clinical use

Contact: [Antagene, Inc.](#) | Tel: 1 (866) 964-2589 | Fax: 1 (888) 225-1868 | Email: Info@antageneinc.com