



Product Information Sheet

Monoclonal Anti-Cathepsin D - Magnetic Bead Conjugate

Catalogue No. MA1013-M

Lot No. 08A12

Clone: CP-D13

Ig type: mouse IgG2a

Size: 200µl

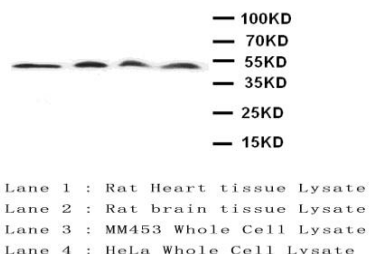
Specificity

Human.

No cross reactivity with other proteins.

Recommended application

Immunoprecipitation(IP)



Immunogen

Human liver cathepsin D.

Purification

Purified by the goat anti-mouse IgG affinity chromatography.

Formulation

Each vial contains 1mg/ml Magnetic Bead in PBS, pH 7.2, 0.05mg NaN₃.

Storage

Store at 4°C for frequent use.

Description

This Antagene antibody is immobilized by the covalent reaction of hydrazinonicotinamide-modified antibody with formylbenzamide-modified beads. It is useful for immunoprecipitation.

BACKGROUND

Cathepsin D is one of the lysosomal proteinases. It is ubiquitously expressed and is involved in proteolytic degradation, cell invasion, and apoptosis. Cathepsin D is mapped to chromosome 11. The amino acid sequence predicted from the cDNA sequence shows that human cathepsin D consists of 412 amino acids with 20 and 44 amino acids in a pre- and a prosegment, respectively

REFERENCE

- Hasilik, A.; von Figura, K.; Grzeschik, K.-H. : Assignment of a gene for human cathepsin D to chromosome 11. (Abstract) *Cytogenet. Cell Genet.* 32: 284 only, 1982.
- Qin, S.; Nakai, H.; Byers, M. G.; Eddy, R. L.; Haley, L. L.; Henry, W. M.; Wang, X.; Watkins, P. C.; Chirgwin, J. M.; Shows, T. B. : Mapping FSHB, CAT, and CTSD to specific sites on 11p. (Abstract) *Cytogenet. Cell Genet.* 46: 678 only, 1987.
- Faust, P. L.; Kornfeld, S.; Chirgwin, J. M. : Cloning and sequence analysis of cDNA for human cathepsin D. *Proc. Nat. Acad. Sci.* 82: 4910-4914, 1985.

FOR RESEARCH USE ONLY. NOT FOR DIAGNOSTIC AND CLINICAL USE.