



Product Information Sheet

Monoclonal Anti-Calbindin-D

Catalogue No. MA1007

Lot No. 08A12

Clone: CB-D7

Ig type: mouse IgG1

Size: 100µg/vial

Specificity

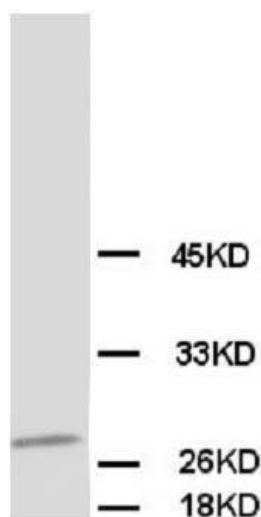
Human, rat, mouse, bovine.

No cross reactivity with other proteins.

Recommended application

Western blot

Immunohistochemistry(P)



Immunogen

Bovine kidney calbindin-D

Purification

Purified by the goat anti-mouse IgG affinity chromatography.

Application

Western blot

At 0.5-1µg/ml with the appropriate system to detect calbindin-D in cells and tissues.

Immunohistochemistry(P)

At 1-2µg/ml to detect calbindin-D in formalin fixed and paraffin embedded tissues.

Other applications have not been tested.

Optimal dilutions should be determined by end user.

Formulation

Lyophilized from 1.2% sodium acetate, with 2mg BSA and 0.01mg NaN₃ as preservative.

Reconstitution

1.2% sodium acetate or neutral PBS. If 1ml of PBS is used, the antibody concentration will be 100µg/ml.

Storage

At -20°C for one year. After reconstitution, at 4°C for one month. It can also be aliquotted and stored frozen at -20°C for longer time.

To reorder contact us at:

Antagene, Inc.

Toll Free: 1(866)964-2589

email: Info@antageneinc.com

FOR RESEARCH USE ONLY. NOT FOR DIAGNOSTIC AND CLINICAL USE.

BACKGROUND

The human calbindin D28k (CALB1) is a calcium-binding protein belonging to the troponin C superfamily. It was originally described as a 27-kD protein induced by vitamin D in the duodenum of the chick. Parmentier et al. (1991) mapped the CALB1 gene to 8q21.3-q22.1 by in situ hybridization.

REFERENCE

Parmentier, M.; Passage, E.; Vassart, G.; Mattei, M.-G. : The human calbindin D28k (CALB1) and calretinin (CALB2) genes are located at 8q21.3-q22.1 and 16q22-q23, respectively, suggesting a common duplication with the carbonic anhydrase isozyme loci. Cytogenet. Cell Genet. 57: 41-43, 1991.