



Product Information Sheet

Monoclonal Anti-Calbindin-D, conjugated to Magnetic Beads

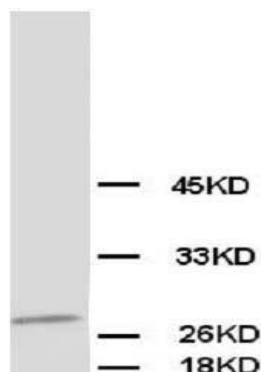
Catalogue No. MA1007-M

Lot No. 08A12

Clone: CB-D7

Ig type: mouse IgG1

Size: 200µl



Specificity

Human, rat, mouse, bovine.

No cross reactivity with other proteins.

Immunogen

Bovine kidney calbindin-D

Purification

Purified by the goat anti-mouse IgG affinity chromatography.

Recommended application

Immunoprecipitation(IP)

Formulation

Each vial contains 1mg/ml Magnetic Bead in PBS, pH 7.2, 0.05mg NaN₃.

Storage

Store at 4°C for frequent use.

Description

This Antagene antibody is immobilized by the covalent reaction of hydrazinonicotinamide-modified antibody with formylbenzamide-modified beads. It is useful for immunoprecipitation.

BACKGROUND

The human calbindin D28k (CALB1) is a calcium-binding protein belonging to the troponin C superfamily. It was originally described as a 27-kD protein induced by vitamin D in the duodenum of the chick. Parmentier et al. (1991) mapped the CALB1 gene to 8q21.3-q22.1 by in situ hybridization.

REFERENCE

Parmentier, M.; Passage, E.; Vassart, G.; Mattei, M.-G. : The human calbindin D28k (CALB1) and calretinin (CALB2) genes are located at 8q21.3-q22.1 and 16q22-q23, respectively, suggesting a common duplication with the carbonic anhydrase isozyme loci. *Cytogenet. Cell Genet.* 57: 41-43, 1991.

For Research Use Only not for diagnostic and clinical use

Contact: **Antagene, Inc.** | Tel: 1 (866) 964-2589 | Fax: 1 (888) 225-1868 | Email: Info@antageneinc.com