



Product Information Sheet

Monoclonal Anti-Bcl-2, conjugated to Magnetic Beads

Catalogue No. MA1004-M

Lot No. 08A12

Clone: BL-2

Ig type: mouse IgG1

Size: 200µl

Specificity

Human.

No cross reactivity with other proteins.

Recommended application

Immunoprecipitation(IP)

Immunogen

Synthetic peptide corresponding to residues 41-54 of the bcl-2 protein, conjugated to thyroglobulin.

Purification

Purified by the goat anti-mouse IgG affinity chromatography.

Formulation

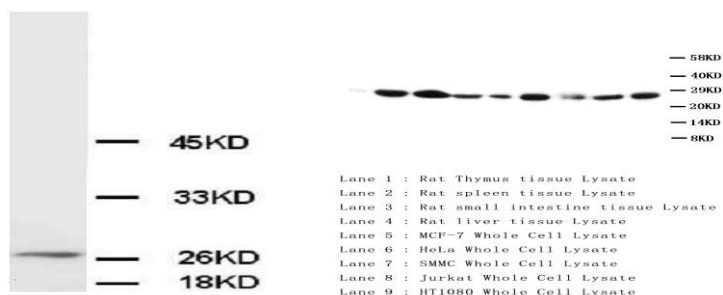
Each vial contains 1mg/ml Magnetic Bead in PBS, pH 7.2, 0.05mg NaN_3 .

Storage

Store at 4°C for frequent use.

Description

This Antagene antibody is immobilized by the covalent reaction of hydrazinonicotinamide-modified antibody with formylbenzamide-modified beads. It is useful for immunoprecipitation.



BACKGROUND

Immunoreactive BCL2 protein in the neoplastic cells of almost all follicular lymphomas whereas no BCL2 protein was detected in follicles affected by nonneoplastic processes or in normal lymphoid tissue. Every tumor with molecular-genetic evidence of t(14;18) translocation expressed detectable levels of BCL2 protein, regardless of whether the breakpoint was located in or at a distance from the BCL2 gene. Overexpression of BCL2 blocks the apoptotic death of a pro-B-lymphocyte cell line.

REFERENCE

1. Ngan, B.-Y.; Chen-Levy, Z.; Weiss, L. M.; Warnke, R. A.; Cleary, M. L. : Expression in non-Hodgkin's lymphoma of the BCL-2 protein associated with the t(14;18) chromosomal translocation. New Eng. J. Med. 318: 1638-1644, 1988.
2. Hockenbery, D.; Nunez, G.; Millman, C.; Schreiber, R. D.; Korsmeyer, S. J. : Bcl-2 is an inner mitochondrial membrane protein that blocks programmed cell death. Nature 348: 334-336, 1990

For Research Use Only not for diagnostic and clinical use

Contact: Antagene, Inc. | Tel: 1 (866) 964-2589 | Fax: 1 (888) 225-1868 | Email: Info@antageneinc.com