



Product Information Sheet

Monoclonal Anti-BCL10

Catalogue No. MA1003

Lot No. 08A12

Clone: BL-10

Ig type: mouse IgG1

Size: 100µg/vial

Specificity

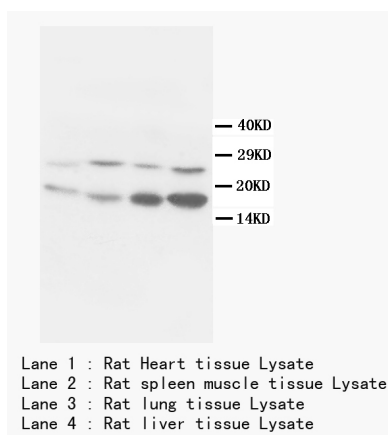
Human.

No cross reactivity with other proteins.

Recommended application

Western blot

Immunohistochemistry(P)



Immunogen

Recombinant human Bcl-10.

Purification

Purified by the goat anti-mouse IgG affinity chromatography.

Application

Western blot

At 1-2µg/ml with the appropriate system to detect BCL10 in cells and tissues.

Immunohistochemistry(P)

At 2-4µg/ml to detect BCL10 in formalin fixed and paraffin embedded tissues. Boiling the sections may improve the staining.

Other applications have not been tested.

Optimal dilutions should be determined by end user.

Formulation

Lyophilized from 1.2% sodium acetate, with 2mg BSA and 0.01mg NaN₃ as preservative.

Reconstitution

1.2% sodium acetate or neutral PBS. If 1ml of PBS is used, the antibody concentration will be 100µg/ml.

Storage

At -20°C for one year. After reconstitution, at 4°C for one month. It can also be aliquotted and stored frozen at -20°C for longer time.

To reorder contact us at:

Antagene, Inc.

Toll Free: 1(866)964-2589

email: Info@antageneinc.com

BACKGROUND

BCL10 was found to be expressed as a transcript of 4.2 kb in all normal and malignant tissues examined. It contains a CARD (caspase recruiting domain) domain and is involved in activation of caspase9 to induce apoptosis. It is known to induce activation of JNK, p38 and NF kappaB. Mutations in Bcl10 are observed in many B and T cell lymphomas implicating its role in pathogenesis of human cancer.

REFERENCE

1. Thome, M.; Martinon, F.; Hofmann, K.; Rubio, V.; Steiner, V.; Schneider, P.; Mattmann, C.; Tschopp, J. : Equine herpesvirus-2 E10 gene product, but not its cellular homologue, activates NF-kappa-B transcription factor and c-Jun N-terminal kinase. *J. Biol. Chem.* 274: 9962-9968, 1999.
2. Willis, T. G.; Jadayel, D. M.; Du, M.-Q.; Peng, H.; Perry, A. R.; Abdul-Rauf, M.; Price, H.; Karran, L.; Majekodunmi, O.; Wlodarska, I.; Pan, L.; Crook, T.; Hamoudi, R.; Isaacson, P. G.; Dyer, M. J. S. : Bcl10 is involved in t(1;14)(p22;q32) of MALT B cell lymphoma and mutated in multiple tumor types *Cell* 96: 35-45, 1999.
3. Xue, L.; Morris, S. W.; Orihuela, C.; Tuomanen, E.; Cui, X.; Wen, R.; Wang, D. : Defective development and function of Bcl10-deficient follicular, marginal zone and B1 B cells. *Nature Immun.* 4: 857-865, 2003.