



## IκB-β (Ab-23) Antibody

**Cat. #:** ANTY021304

**Species:** Human, Mouse, Rat

**Quantity:** 100ug

**Concentration:** 100ug/100ul

### Storage and Stability:

Store at -20°C/1 year

### Immunogen:

The antiserum was produced against synthesized non-phosphopeptide derived from human IκB-β around the phosphorylation site of serine 23 (L-G-SP-L-G).

### Specificity:

IκB-β (Ab-23) Antibody detects endogenous levels of total IκB-β protein.

**Tested Application:** WB and IHC

**Application Notes:** Rabbit IgG in phosphate buffered saline (without Mg<sup>2+</sup> and Ca<sup>2+</sup>), pH 7.4, 150mM NaCl, 0.02% sodium azide and 50% glycerol.

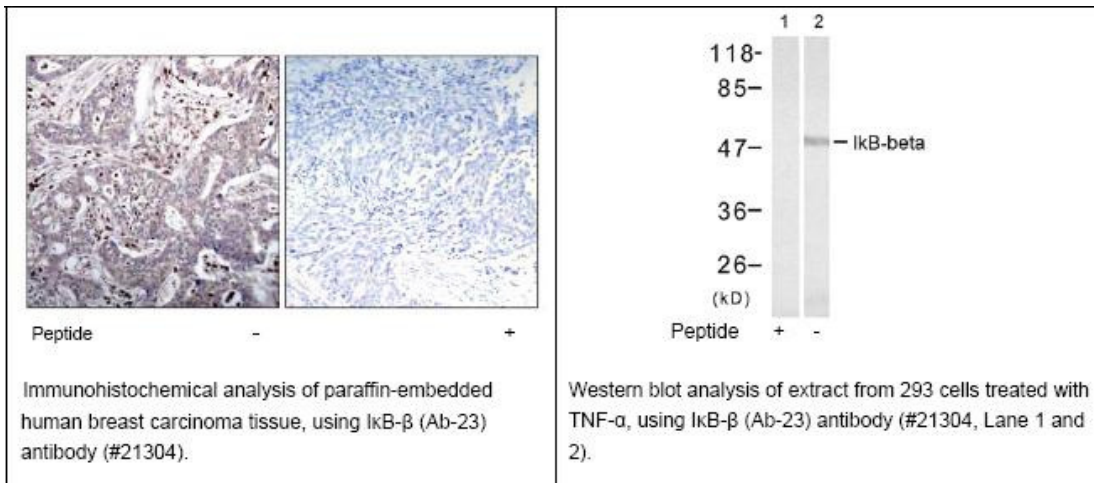
**Raised In:** Rabbit

**Purity:** The antibody was affinity-purified from rabbit antiserum by affinity-chromatography using epitope-specific immunogen.

### Storage buffer:

WB: 1:500~1:1000; IHC: 1:50-1:100

**Form:** Liquid



**For research use only**

Antagene, Inc. Toll Free: 1-866-964-2589, Fax: 1-888-225-1868, [info@antageneinc.com](mailto:info@antageneinc.com),  
[www.antageneinc.com](http://www.antageneinc.com)