



IkB-ε (Ab-22) Antibody

Cat. #: ANTY021296

Species: Human, Mouse

Quantity: 100ug

Concentration: 100ug/100ul

Storage and Stability:

Store at -20°C/1 year

Immunogen:

The antiserum was produced against synthesized non-phosphopeptide derived from human IkB-ε around the phosphorylation site of serine 22 (I-E-SP-L-R).

Specificity:

IkB-ε (Ab-22) antibody detects endogenous levels of total IkB-ε protein.

Tested Application: WB and IHC

Application Notes: Rabbit IgG in phosphate buffered saline (without Mg²⁺ and Ca²⁺), pH 7.4, 150mM NaCl, 0.02% sodium azide and 50% glycerol.

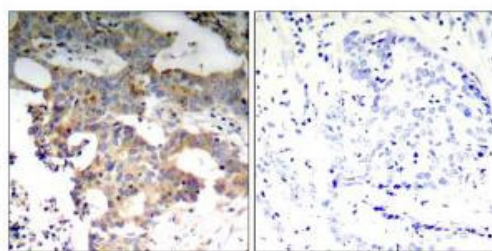
Raised In: Rabbit

Purity: The antibody was affinity-purified from rabbit antiserum by affinity-chromatography using epitope-specific immunogen

Storage buffer:

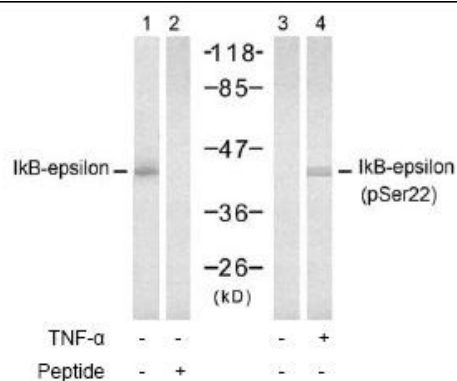
WB: 1:500~1:1000; IHC: 1:50~1:100

Form: Liquid



Peptide - +

Immunohistochemical analysis of paraffin-embedded human breast carcinoma tissue using IkB-ε (Ab-22) antibody (#21296).



Western blot analysis of extract from 293 cells, untreated or treated with TNF-α (20ng/ml, 15min), using IkB-ε (Ab-22) antibody (#21296, Lane 1 and 2) and IkB-ε (Phospho-Ser22) antibody (#11213, Lane 3 and 4).

For research use only

Antagene, Inc. Toll Free: 1-866-964-2589, Fax: 1-888-225-1868, info@antageneinc.com,
www.antageneinc.com