



HSP90B (Ab-254) Antibody

Cat. #: ANTY021290

Species: Human, Mouse, Rat

Quantity: 100ug

Concentration: 100ug/100ul

Storage and Stability:

Store at -20°C/1 year

Immunogen:

The antiserum was produced against synthesized non-phosphopeptide derived from human HSP90B around the phosphorylation site of serine 254 (V-G-SP-D-E).

Specificity:

HSP90B (Ab-254) antibody detects endogenous levels of total HSP90B protein.

Tested Application: WB and IHC

Application Notes: Rabbit IgG in phosphate buffered saline (without Mg²⁺ and Ca²⁺), pH 7.4, 150mM NaCl, 0.02% sodium azide and 50% glycerol.

Raised In: Rabbit

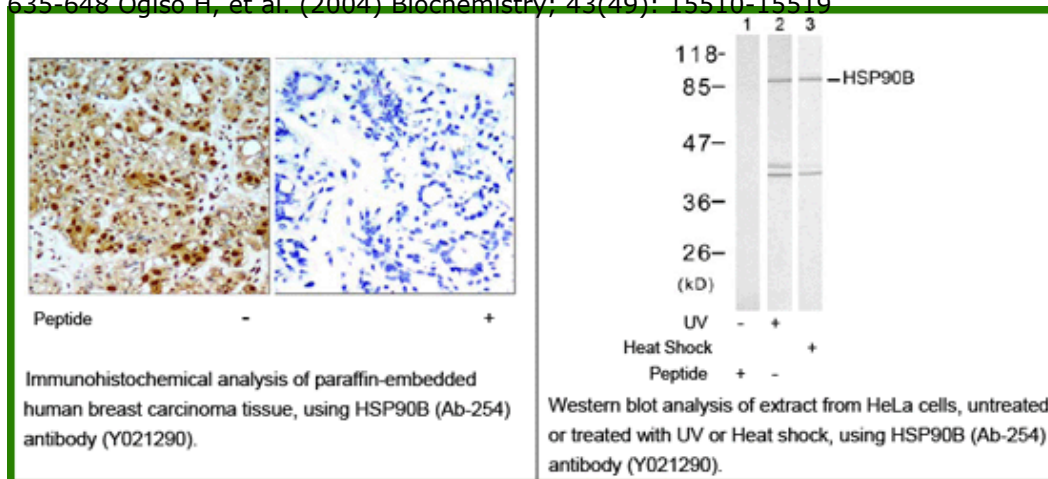
Purity: The antibody was affinity-purified from rabbit antiserum by affinity-chromatography using epitope-specific immunogen.

Storage buffer: WB: 1:500~1:1000 IHC: 1:50-1:100

Form: Liquid

Reference:

Zhao R, Houry WA.(2007) Adv Exp Med Biol; 594: 27-36. Olsen JV, et al. (2006) Cell; 127(3): 635-648 Ogiso H, et al. (2004) Biochemistry; 43(49): 15510-15519



For research use only

Antagene, Inc. Toll Free: 1-866-964-2589, Fax: 1-888-225-1868, info@antageneinc.com,
www.antageneinc.com