



MEK1 (Ab-291) Antibody

Cat. #: ANTY021288

Species: Human, Mouse, Rat

Quantity: 100ug

Concentration: 100ug/100ul

Storage and Stability:

Store at -20°C/1 year

Immunogen:

The antiserum was produced against synthesized non-phosphopeptide derived from human PKC δ around the phosphorylation site of serine 645 (R-L-SP-Y-S).

Specificity:

PKC δ (Ab-645) antibody detects endogenous levels of total PKC δ protein.

Tested Application: WB and IHC

Application Notes: Rabbit IgG in phosphate buffered saline (without Mg²⁺ and Ca²⁺), pH 7.4, 150mM NaCl, 0.02% sodium azide and 50% glycerol.

Raised In: Rabbit

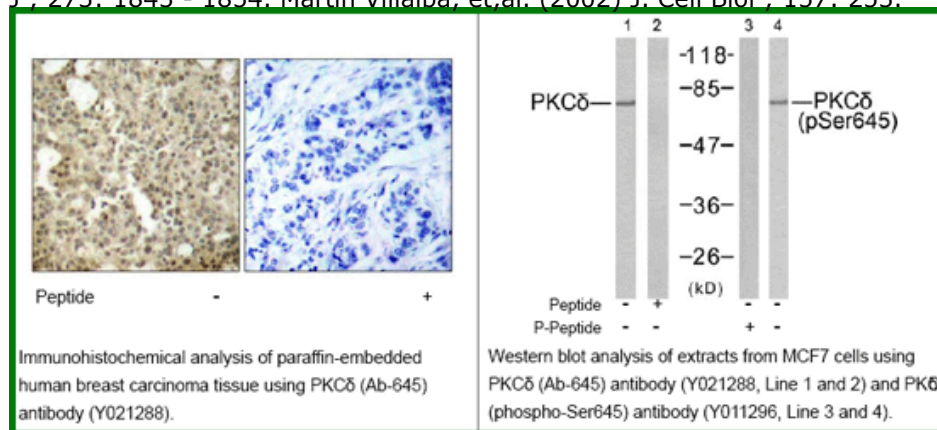
Purity: The antibody was affinity-purified from rabbit antiserum by affinity-chromatography using epitope-specific immunogen.

Storage buffer: WB: 1:500~1:1000 IHC: 1:50~1:100

Form: Liquid

Reference:

Kei Sakamoto, et.al. (2003) Am J Physiol Endocrinol Metab ; 285: E1081 - E1088. Ling Zhang, et.al. (2004) J. Biol. Chem ; 279: 28315 - 28319. Kristof Van Kolen et.al. (2006) FEBS J ; 273: 1843 - 1854. Martin Villalba, et.al. (2002) J. Cell Biol ; 157: 253.



For research use only

Antagene, Inc. Toll Free: 1-866-964-2589, Fax: 1-888-225-1868, info@antageneinc.com,
www.antageneinc.com