



## MEK1 (Ab-291) Antibody

**Cat. #:** ANTY021286

**Species:** Human, Mouse, Rat

**Quantity:** 100ug

**Concentration:** 100ug/100ul

### Storage and Stability:

Store at -20°C/1 year

### Immunogen:

The antiserum was produced against synthesized non-phosphopeptide derived from human MEK1 around the phosphorylation site of threonine 291 (P-R-TP-P-G).

### Specificity:

MEK1 (Ab-291) antibody detects endogenous levels of total MEK1 protein.

**Tested Application:** WB and IHC

**Application Notes:** Rabbit IgG in phosphate buffered saline (without Mg<sup>2+</sup> and Ca<sup>2+</sup>), pH 7.4, 150mM NaCl, 0.02% sodium azide and 50% glycerol.

**Raised In:** Rabbit

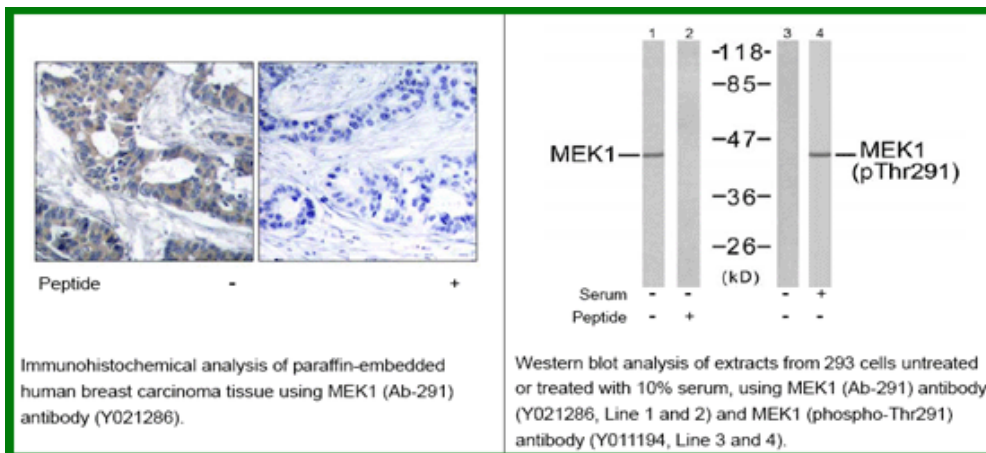
**Purity:** The antibody was affinity-purified from rabbit antiserum by affinity-chromatography using epitope-specific immunogen.

**Storage buffer:** WB: 1:500~1:1000 IHC: 1:50~1:100

**Form:** Liquid

### Reference:

Kevin D. Burroughs, et.al. (2003) Mol. Cancer Res ; 1: 312. Michael J. Piatelli, et.al. (2002) J. Biol. Chem ; 277: 12144 - 12150. Margaret M. Morgan, et.al. (2001) J. Immunol ; 167: 5708. Herbert Schramek, et.al. (2003) Am J Physiol Cell Physiol ; 285: C652 - C661.



**For research use only**

Antagene, Inc. Toll Free: 1-866-964-2589, Fax: 1-888-225-1868, [info@antageneinc.com](mailto:info@antageneinc.com),  
[www.antageneinc.com](http://www.antageneinc.com)