



Gab1 (Ab-627) Antibody

Cat. #: ANTY021283

Species: Human, Mouse

Quantity: 100ug

Concentration: 100ug/100ul

Storage and Stability:

Store at -20°C/1 year

Immunogen:

The antiserum was produced against synthesized non-phosphopeptide derived from human Gab1 around the phosphorylation site of tyrosine 627 (V-E-YP-L-D).

Specificity:

Gab1 (Ab-627) antibody detects endogenous levels of total Gab1 protein.

Tested Application: WB

Application Notes: Rabbit IgG in phosphate buffered saline (without Mg²⁺ and Ca²⁺), pH 7.4, 150mM NaCl, 0.02% sodium azide and 50% glycerol.

Raised In: Rabbit

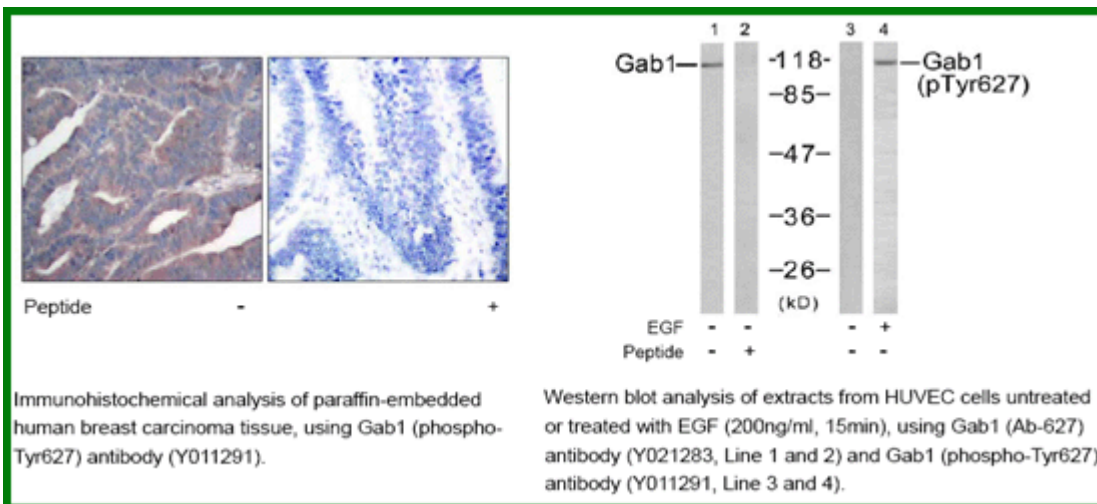
Purity: The antibody was affinity-purified from rabbit antiserum by affinity-chromatography using epitope-specific immunogen.

Storage buffer: WB: 1:500~1:1000

Form: Liquid

Reference:

Anders Kallin, et.al. (2004) J. Biol. Chem; 279: 17897 - 17904. Hideto Kameda, et.al. (2001) Cell Growth Differ; 12: 307. Masaki Osawa, et.al. (2002) J. Cell Biol; 158: 773.



For research use only

Antagene, Inc. Toll Free: 1-866-964-2589, Fax: 1-888-225-1868, info@antageneinc.com,
www.antageneinc.com