



## **GAP43 (Ab-41) Antibody**

**Cat. #:** ANTY021273

**Species:** Human, Mouse, Rat

**Quantity:** 100ug

**Concentration:** 100ug/100ul

**Storage and Stability:**

Store at -20°C/1 year

**Immunogen:**

The antiserum was produced against synthesized non-phosphopeptide derived from human GAP43 around the phosphorylation site of serine 41 (Q-A-SP-F-R).

**Specificity:**

GAP43 (Ab-41) antibody detects endogenous levels of total GAP43 protein.

**Tested Application:** IHC

**Application Notes:** Rabbit IgG in phosphate buffered saline (without Mg<sup>2+</sup> and Ca<sup>2+</sup>), pH 7.4, 150mM NaCl, 0.02% sodium azide and 50% glycerol.

**Raised In:** Rabbit

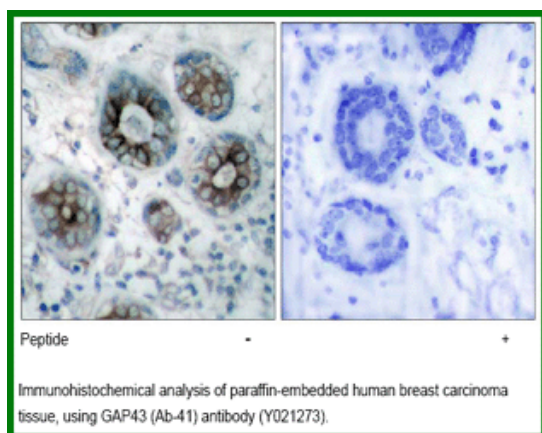
**Purity:** The antibody was affinity-purified from rabbit antiserum by affinity-chromatography using epitope-specific immunogen.

**Storage buffer:** IHC: 1:50~1:100

**Form:** Liquid

**Reference:**

Rachael L. Neve, et.al. (1998) J. Neurosci; 18: 7757. Yiping Shen, et.al. (2002) J. Neurosci; 22: 239. Chantal Gamby, et.al. (1996) J. Biol. Chem; 271: 26698.



**For research use only**

Antagene, Inc. Toll Free: 1-866-964-2589, Fax: 1-888-225-1868, [info@antageneinc.com](mailto:info@antageneinc.com),  
[www.antageneinc.com](http://www.antageneinc.com)