



Cortactin (Ab-466) Antibody

Cat. #: ANTY021264

Species: Human, Mouse

Quantity: 100ug

Concentration: 100ug/100ul

Storage and Stability:

Store at -20°C/1 year

Immunogen:

The antiserum was produced against synthesized non-phosphopeptide derived from mouse Cortactin around the phosphorylation site of tyrosine 466 (P-V-YP-E-T).

Specificity:

Cortactin (Ab-466) antibody detects endogenous levels of total Cortactin protein.

Tested Application: IHC

Application Notes: Rabbit IgG in phosphate buffered saline (without Mg²⁺ and Ca²⁺), pH 7.4, 150mM NaCl, 0.02% sodium azide and 50% glycerol.

Raised In: Rabbit

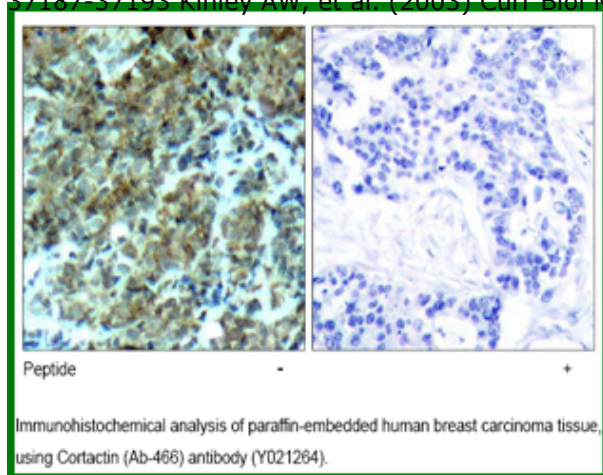
Purity: The antibody was affinity-purified from rabbit antiserum by affinity-chromatography using epitope-specific immunogen.

Storage buffer: IHC: 1:50~1:100

Form: Liquid

Reference:

Zhou S, (2005) Am J Physiol Cell Physiol Sep 14 Li Y, et al. (2000) J Biol Chem Nov; 275(47): 37187-37193 Kinley AW, et al. (2003) Curr Biol Mar 04; 13(5): 384-393



For research use only

Antagene, Inc. Toll Free: 1-866-964-2589, Fax: 1-888-225-1868, info@antageneinc.com,
www.antageneinc.com