



Cortactin (Ab-421) Antibody

Cat. #: ANTY021263

Species: Human, Mouse

Quantity: 100ug

Concentration: 100ug/100ul

Storage and Stability:

Store at -20°C/1 year

Immunogen:

The antiserum was produced against synthesized non-phosphopeptide derived from mouse Cortactin around the phosphorylation site of tyrosine 421 (P-I-YP-E-D).

Specificity:

Cortactin (Ab-421) antibody detects endogenous levels of total Cortactin protein.

Tested Application: IHC

Application Notes: Rabbit IgG in phosphate buffered saline (without Mg²⁺ and Ca²⁺), pH 7.4, 150mM NaCl, 0.02% sodium azide and 50% glycerol.

Raised In: Rabbit

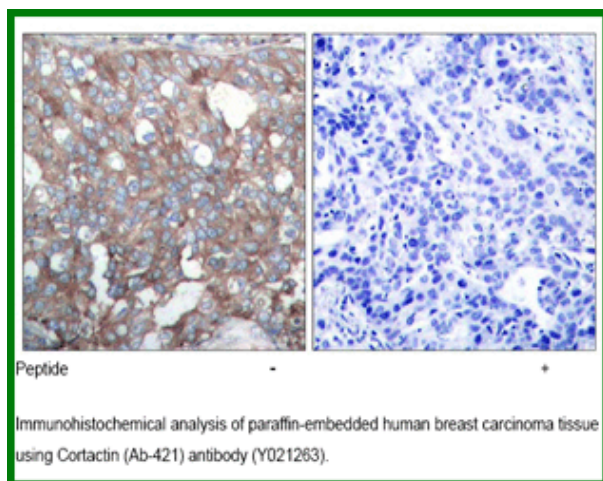
Purity: The antibody was affinity-purified from rabbit antiserum by affinity-chromatography using epitope-specific immunogen.

Storage buffer: IHC: 1:50~1:100

Form: Liquid

Reference:

Goss VL, et al. (2006) Blood Feb 23 Salomon AR, et al. (2003) Proc Natl Acad Sci U S A Jan 21; 100(2): 443-448 Huang C, et al. (1998) J Biol Chem Oct; 273(40): 25770-25776.



For research use only

Antagene, Inc. Toll Free: 1-866-964-2589, Fax: 1-888-225-1868, info@antageneinc.com,
www.antageneinc.com