



Tau (Ab-422) Antibody

Cat. #: ANTY021262

Species: Human, Mouse, Rat

Quantity: 100ug

Concentration: 100ug/100ul

Storage and Stability:

Store at -20°C/1 year

Immunogen:

The antiserum was produced against synthesized non-phosphopeptide derived from human Tau around the phosphorylation site of serine 422 (V-D-SP-P-Q).

Specificity:

Tau (Ab-422) antibody detects endogenous levels of total Tau protein.

Tested Application: WB

Application Notes: Rabbit IgG in phosphate buffered saline (without Mg²⁺ and Ca²⁺), pH 7.4, 150mM NaCl, 0.02% sodium azide and 50% glycerol.

Raised In: Rabbit

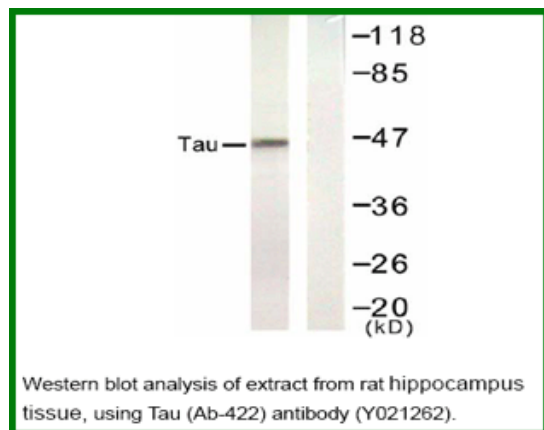
Purity: The antibody was affinity-purified from rabbit antiserum by affinity-chromatography using epitope-specific immunogen.

Storage buffer: WB: 1:500~1:1000

Form: Liquid

Reference:

Gong CX, et al. (2006) J Biomed Biotechnol. 2006: 31825 Gamblin TC, et al. (2003) Proc Natl Acad Sci U S A. 2003 Aug 19; 100(17): 10032-10037 Xu X., et al. (1997) Proc Natl Acad Sci U S A. Nov 11; 94(23): 12655-12660



For research use only

Antagene, Inc. Toll Free: 1-866-964-2589, Fax: 1-888-225-1868, info@antageneinc.com,
www.antageneinc.com