



## p70 S6 Kinase (Ab-411) Antibody

**Cat. #:** ANTY021261

**Species:** Human, Mouse, Rat

**Quantity:** 100ug

**Concentration:** 100ug/100ul

### Storage and Stability:

Store at -20°C/1 year

### Immunogen:

The antiserum was produced against synthesized phosphopeptide derived from human p70 S6 Kinase around the phosphorylation site of serine 411 (I-R-SP-P-R).

### Specificity:

p70 S6 Kinase (Ab-411) antibody detects endogenous levels of total p70 S6 Kinase protein.

**Tested Application:** WB, IHC

**Application Notes:** Rabbit IgG in phosphate buffered saline (without Mg<sup>2+</sup> and Ca<sup>2+</sup>), pH 7.4, 150mM NaCl, 0.02% sodium azide and 50% glycerol.

**Raised In:** Rabbit

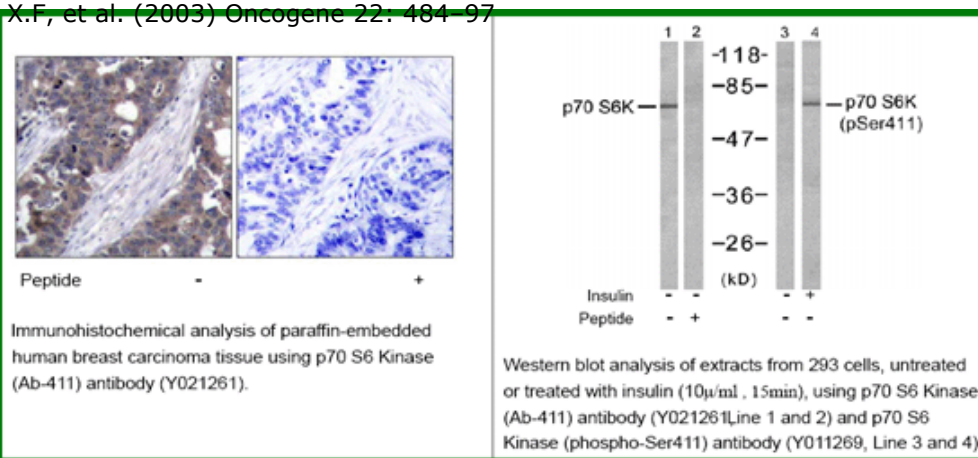
**Purity:** The antibody was affinity-purified from rabbit antiserum by affinity-chromatography using epitope-specific immunogen.

**Storage buffer:** WB: 1:500~1:1000 IHC: 1:50-1:100

**Form:** Liquid

### Reference:

Satoru Eguchi et al. (1999) J Biol Chem, Vol. 274: 36843-36851 Papst PJ, et al. (1998) J Biol Chem. 273(24):15077-84. Ulrike Krause et al. (2002) Eur. J. Biochem. 269: 3751-3759 c Le, X.F, et al. (2003) Oncogene 22: 484-97



**For research use only**

Antagene, Inc. Toll Free: 1-866-964-2589, Fax: 1-888-225-1868, [info@antageneinc.com](mailto:info@antageneinc.com),  
[www.antageneinc.com](http://www.antageneinc.com)