



Histone H2A.X (Ab-139) Antibody

Cat. #: ANTY021260

Species: Human, Mouse, Rat

Quantity: 100ug

Concentration: 100ug/100ul

Storage and Stability:

Store at -20°C/1 year

Immunogen:

The antiserum was produced against synthesized non-phosphopeptide derived from human Histone H2A.X around the phosphorylation site of serine 139 (Q-A-SP-Q-E).

Specificity:

Histone H2A.X (Ab-139) antibody detects endogenous levels of total Histone H2A.X protein.

Tested Application: WB and IHC

Application Notes: Rabbit IgG in phosphate buffered saline (without Mg²⁺ and Ca²⁺), pH 7.4, 150mM NaCl, 0.02% sodium azide and 50% glycerol.

Raised In: Rabbit

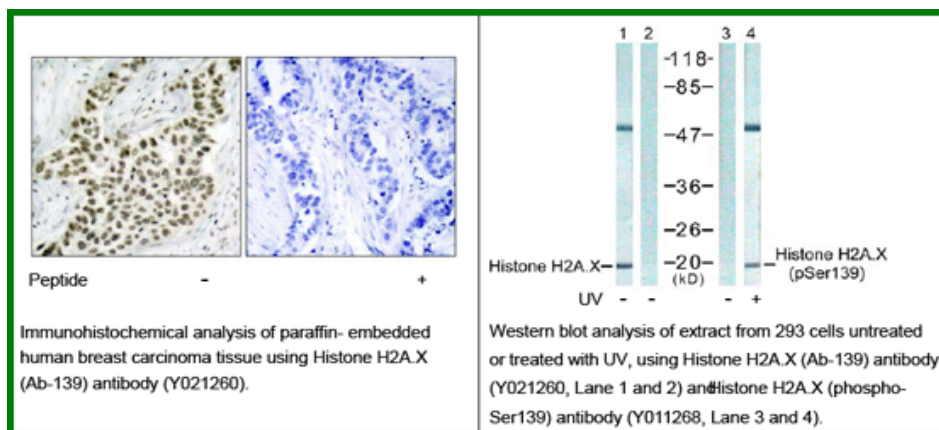
Purity: The antibody was affinity-purified from rabbit antiserum by affinity-chromatography using epitope-specific immunogen.

Storage buffer: WB: 1:500~1:1000 IHC: 1:50~1:100

Form: Liquid

Reference:

Yaneva M, et al. (2005) Nucleic Acids Res. 33(16): 5320-5330. Tsukuda T, et al.(2006) Nature. Author manuscript; available in PMC 2006 March 6.



For research use only

Antagene, Inc. Toll Free: 1-866-964-2589, Fax: 1-888-225-1868, info@antageneinc.com,
www.antageneinc.com