



MARCKS (Ab-162) Antibody

Cat. #: ANTY021257

Species: Human, Mouse, Rat

Quantity: 100ug

Concentration: 100ug/100ul

Storage and Stability:

Store at -20°C/1 year

Immunogen:

The antiserum was produced against synthesized non-phosphopeptide derived from human MARCKS around the phosphorylation site of serine 162 (K-K-SP-F-K).

Specificity:

MARCKS (Ab-162) antibody detects endogenous levels of total MARCKS protein.

Tested Application: WB

Application Notes: Rabbit IgG in phosphate buffered saline (without Mg²⁺ and Ca²⁺), pH 7.4, 150mM NaCl, 0.02% sodium azide and 50% glycerol.

Raised In: Rabbit

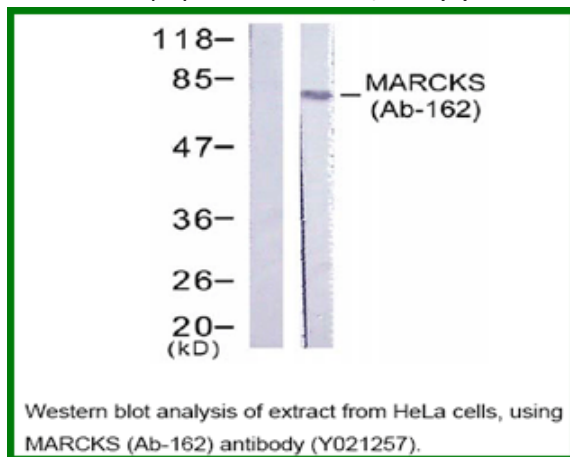
Purity: The antibody was affinity-purified from rabbit antiserum by affinity-chromatography using epitope-specific immunogen.

Storage buffer: WB: 1:500~1:1000

Form: Liquid

Reference:

Pariser H, et al. Proc Natl Acad Sci U S A 2005 Aug 30; 102(35): 12407-12412 Nagumo H, et al. Biochem Biophys Res Commun 2001 Jan 26; 280(3): 605-609 Yamamoto H, et al. Arch Biochem Biophys 1998 Nov 15; 359(2): 151-159



For research use only

Antagene, Inc. Toll Free: 1-866-964-2589, Fax: 1-888-225-1868, info@antageneinc.com,
www.antageneinc.com