



EGFR (Ab-1110) Antibody

Cat. #: ANTY021256

Species: Human, Mouse, Rat

Quantity: 100ug

Concentration: 100ug/100ul

Storage and Stability:

Store at -20°C/1 year

Immunogen:

The antiserum was produced against synthesized non-phosphopeptide derived from human EGFR around the phosphorylation site of tyrosine 1110 (P-V-YP-H-N).

Specificity:

EGFR (Ab-1110) antibody detects endogenous levels of total EGFR protein.

Tested Application: WB

Application Notes: Rabbit IgG in phosphate buffered saline (without Mg²⁺ and Ca²⁺), pH 7.4, 150mM NaCl, 0.02% sodium azide and 50% glycerol.

Raised In: Rabbit

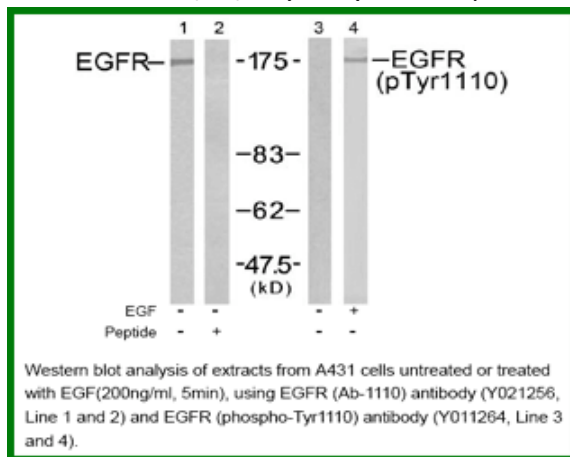
Purity: The antibody was affinity-purified from rabbit antiserum by affinity-chromatography using epitope-specific immunogen.

Storage buffer: WB: 1:500~1:1000

Form: Liquid

Reference:

Kaisa Erjala, et.al. (2006) Clin. Cancer Res Jul 2006; 12: 4103 - 4111. Judit Anido, et.al. (2003) Clin. Cancer Res ; 9: 1274. Julian Andreev, et.al. (2001) J. Biol. Chem ; 276: 20130 - 20135. Suil Kim, et.al. (2002) Am J Physiol Lung Cell Mol Physiol, ; 283: 67.



For research use only

Antagene, Inc. Toll Free: 1-866-964-2589, Fax: 1-888-225-1868, info@antageneinc.com,
www.antageneinc.com