



Connexin 43 (Ab-367) Antibody

Cat. #: ANT021250

Species: Human, Mouse, Rat

Quantity: 100ug

Concentration: 100ug/100ul

Storage and Stability:

Store at -20°C/1 year

Immunogen:

The antiserum was produced against synthesized phosphopeptide derived from human Connexin43 around the phosphorylation site of serine 367 (R-A-SP-S-R).

Specificity:

Connexin43 (Ab-367) antibody detects endogenous levels of total Connexin43 protein.

Tested Application: WB and IHC

Application Notes: Rabbit IgG in phosphate buffered saline (without Mg²⁺ and Ca²⁺), pH 7.4, 150mM NaCl, 0.02% sodium azide and 50% glycerol.

Raised In: Rabbit

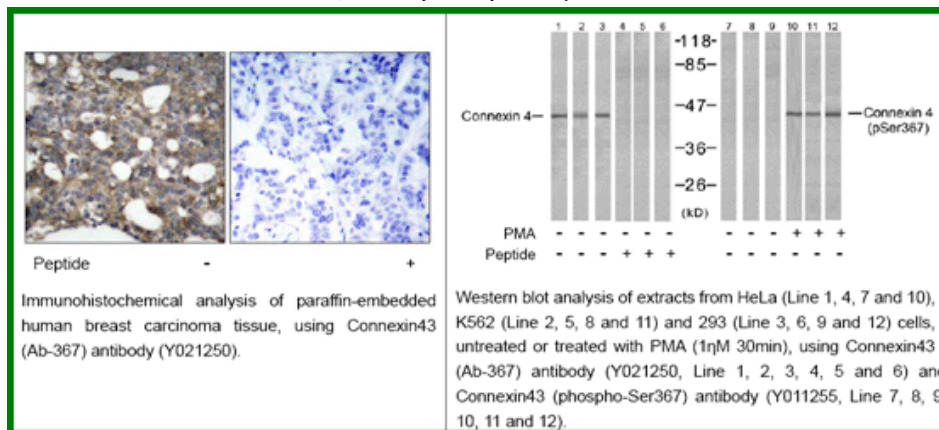
Purity: The antibody was affinity-purified from rabbit antiserum by affinity-chromatography using epitope-specific immunogen.

Storage buffer: WB: 1:500~1:1000 IHC: 1:50~1:100

Form: Liquid

Reference:

Joell L. Solan¹, et al. (2003) Cell Science 116: 2203-2211 Satoshi Matsushita, et al. (2006) Histochemistry and Cytochemistry 54 (3): 343-353, Xiaoyong Bao, et al. (2004) Cell Physiol 286: C647-C654 W. E. I. Li, et al. (1998) European Journal of Neuroscience 10: 2444



For research use only

Antagene, Inc. Toll Free: 1-866-964-2589, Fax: 1-888-225-1868, info@antageneinc.com,
www.antageneinc.com