



p70 S6 Kinase (Ab-421) Antibody

Cat. #: ANTY021246

Species: Human, Mouse and Rat

Quantity: 100ug

Concentration: 100ug/100ul

Storage and Stability:

Store at -20°C/1 year

Immunogen:

The antiserum was produced against synthesized phosphopeptide derived from human p70 S6 Kinase around the phosphorylation site of threonine 421 (P-R-TP-P-V).

Specificity:

p70 S6 Kinase (Ab-421) antibody detects endogenous levels of total p70 S6 Kinase protein.

Tested Application: IHC

Application Notes: Rabbit IgG in phosphate buffered saline (without Mg²⁺ and Ca²⁺), pH 7.4, 150mM NaCl, 0.02% sodium azide and 50% glycerol.

Raised In: Rabbit

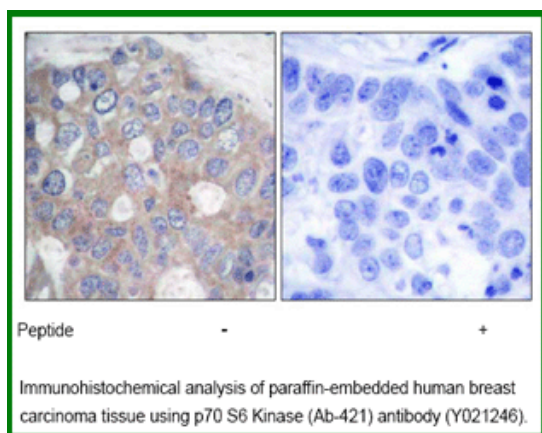
Purity: The antibody was affinity-purified from rabbit antiserum by affinity-chromatography using epitope-specific immunogen.

Storage buffer: IHC: 1:50~1:100

Form: Liquid

Reference:

Xiao-Feng, et al. (2003) Le1 30 Volume 22: 484-497 An WL, et al. (2003) Am J Pathol. 163(2): 591-607. Le XF, et al. (2003) Oncogene.22(4): 484-97



For research use only

Antagene, Inc. Toll Free: 1-866-964-2589, Fax: 1-888-225-1868, info@antageneinc.com,
www.antageneinc.com