



p38 MAPK(Ab-182) Antibody

Cat. #: ANTY021245

Species: Human, Mouse and Rat

Quantity: 100ug

Concentration: 100ug/100ul

Storage and Stability:

Store at -20°C/1 year

Immunogen:

The antiserum was produced against synthesized non-phosphopeptide derived from human P38MAPK around the phosphorylation site of tyrosine 182 (T-G-YP-V-A).

Specificity:

P38MAPK (Ab-182) antibody detects endogenous levels of total P38MAPK protein.

Tested Application: WB

Application Notes: Rabbit IgG in phosphate buffered saline (without Mg²⁺ and Ca²⁺), pH 7.4, 150mM NaCl, 0.02% sodium azide and 50% glycerol.

Raised In: Rabbit

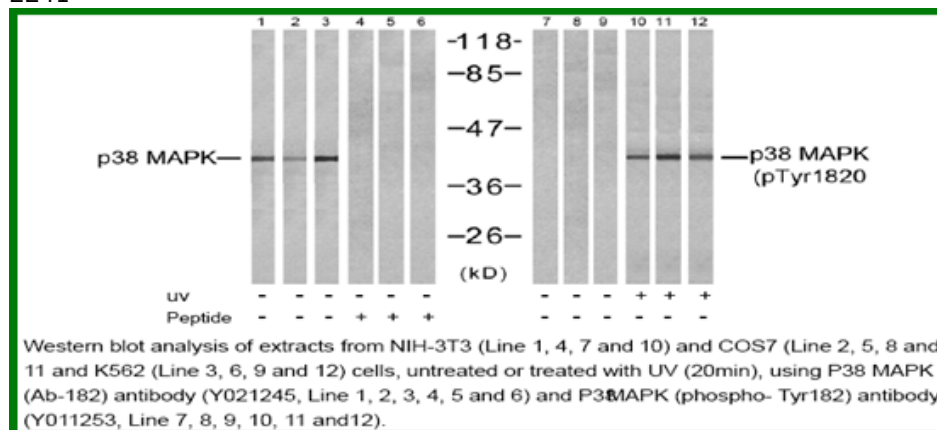
Purity: The antibody was affinity-purified from rabbit antiserum by affinity-chromatography using epitope-specific immunogen.

Storage buffer: WB: 1:500~1:1000

Form: Liquid

Reference:

Ming Zheng, et al.(2005) The FASEB Journal. 19: 109-111 Bernt van den et al.(2001) Blink Immunology, 166: 582-587 Arshad Rahman, et al. (2004) Am J Physiol Lung Cell Mol Physiol 287: L1017-L1024 Osamu Yoshino, et al. (2003) Endocrinology & Metabolism Vol. 88: 2236-2241



For research use only

Antagene, Inc. Toll Free: 1-866-964-2589, Fax: 1-888-225-1868, info@antageneinc.com,
www.antageneinc.com