



NF- κ B p105/p50Ab-932) Antibody

Cat. #: ANTY021243

Species: Human, Mouse and Rat

Quantity: 100ug

Concentration: 100ug/100ul

Storage and Stability:

Store at -20°C/1 year

Immunogen:

The antiserum was produced against synthesized non-phosphopeptide derived from human NF κ B-p105/p50 around the phosphorylation site of serine 932 (E-T-SP-F-R).

Specificity:

NF κ B-p105/p50 (Ab-932) antibody detects endogenous levels of total NF κ B-p105/p50 protein.

Tested Application: WB and IHC

Application Notes: Rabbit IgG in phosphate buffered saline (without Mg²⁺ and Ca²⁺), pH 7.4, 150mM NaCl, 0.02% sodium azide and 50% glycerol.

Raised In: Rabbit

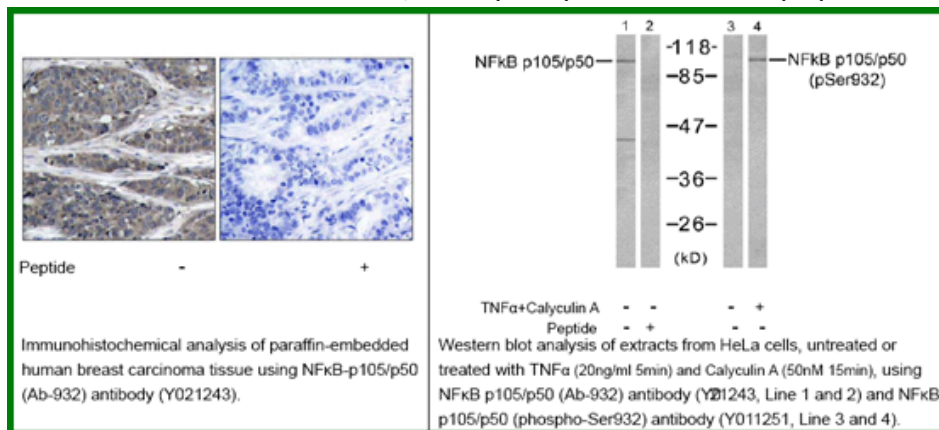
Purity: The antibody was affinity-purified from rabbit antiserum by affinity-chromatography using epitope-specific immunogen.

Storage buffer: WB: 1:500~1:1000 IHC: 1:50-1:100

Form: Liquid

Reference:

Sören Beinke et al. (2004) Biochem J. 382(Pt 2): 393–409. Vigo Heissmeyer¹, et al. (1999) The EMBO Journal 18: 4766–4778, F Chen, et al. (2006) Cell Death and Differentiation 13: 1835–1838. Kris A. Steinbrecher, et al. (2005) Mol Cell Biol. 25(19): 8444–8455.



For research use only

Antagene, Inc. Toll Free: 1-866-964-2589, Fax: 1-888-225-1868, info@antageneinc.com,
www.antageneinc.com