



IRS-1 (Ab-307) Antibody

Cat. #: ANTY021228

Species: Human, Mouse and Rat

Quantity: 100ug

Concentration: 100ug/100ul

Storage and Stability:

Store at -20°C/1 year

Immunogen:

The antiserum was produced against synthesized non-phosphopeptide derived from human IRS-1 around the phosphorylation site of serine 307.

Specificity:

IRS-1 (Ab-307) antibody detects endogenous levels of total IRS-1 protein.

Tested Application: IHC

Application Notes: Rabbit IgG in phosphate buffered saline (without Mg²⁺ and Ca²⁺), pH 7.4, 150mM NaCl, 0.02% sodium azide and 50% glycerol.

Raised In: Rabbit

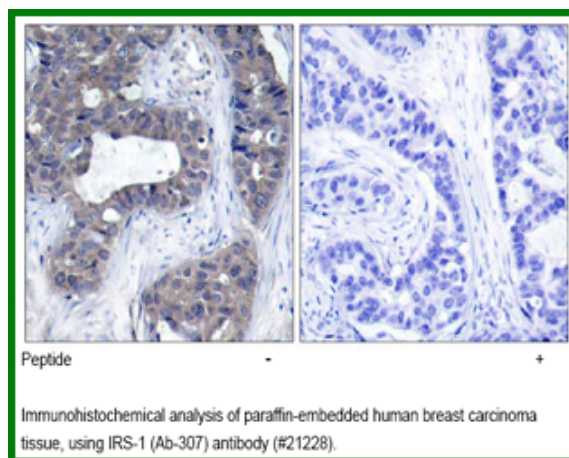
Purity: The antibody was affinity-purified from rabbit antiserum by affinity-chromatography using epitope-specific immunogen.

Storage buffer: IHC: 1:50~1:100

Form: Liquid

Reference:

Steppan CM, et al. (2005) Mol Cell Biol; 25(4): 1569-1575 Tuncman G, et al. (2006) Proc Natl Acad Sci U S A; 103(28): 10741-10746 Shoelson SE, et al. (2006) J Clin Invest; 116(7): 1793-1801



For research use only

Antagene, Inc. Toll Free: 1-866-964-2589, Fax: 1-888-225-1868, info@antageneinc.com,
www.antageneinc.com