



## **Stathmin 1 (Ab-15) Antibody**

**Cat. #:** ANTY021227

**Species:** Human, Mouse and Rat

**Quantity:** 100ug

**Concentration:** 100ug/100ul

**Storage and Stability:**

Store at -20°C/1 year

**Immunogen:**

The antiserum was produced against synthesized non-phosphopeptide derived from human Stathmin 1 around the phosphorylation site of serine 15 (R-A-SP-G-Q)

**Specificity:**

Stathmin 1 (Ab-15) antibody detects endogenous levels of total Stathmin 1 protein.

**Tested Application:** IHC

**Application Notes:** Rabbit IgG in phosphate buffered saline (without Mg<sup>2+</sup> and Ca<sup>2+</sup>), pH 7.4, 150mM NaCl, 0.02% sodium azide and 50% glycerol.

**Raised In:** Rabbit

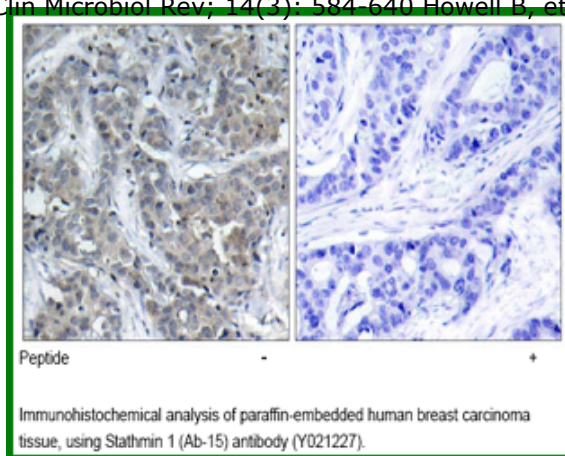
**Purity:** The antibody was affinity-purified from rabbit antiserum by affinity-chromatography using epitope-specific immunogen.

**Storage buffer:** IHC: 1:50~1:100

**Form:** Liquid

**Reference:**

Larsson N, et al. (1999) Mol Cell Biol; 19(3): 2242-2250 Kuntziger T, et al. (2001) Mol Biol Cell; 12(2): 437-448 Vadlamudi RK, et al. (2005) Mol Cell Biol; 25(9): 3726-3736 Vázquez-Boland JA, et al. (2001) Clin Microbiol Rev; 14(3): 584-640 Howell B, et al. (1999) Mol Biol Cell; 10(1): 105-118



**For research use only**

Antagene, Inc. Toll Free: 1-866-964-2589, Fax: 1-888-225-1868, [info@antageneinc.com](mailto:info@antageneinc.com),  
[www.antageneinc.com](http://www.antageneinc.com)