



## S6 Ribosomal Protein (Ab-235) Antibody

**Cat. #:** ANTY021225

**Species:** Human, Mouse and Rat

**Quantity:** 100ug

**Concentration:** 100ug/100ul

**Storage and Stability:**

Store at -20°C/1 year

**Immunogen:**

The antiserum was produced against synthesized non-phosphopeptide derived from human S6 Ribosomal protein around the phosphorylation site of serine 235 (R-L-SP-S-L).

**Specificity:**

S6 Ribosomal protein (Ab-235) antibody detects endogenous levels of total S6 Ribosomal protein.

**Tested Application:** WB

**Application Notes:** Rabbit IgG in phosphate buffered saline (without Mg<sup>2+</sup> and Ca<sup>2+</sup>), pH 7.4, 150mM NaCl, 0.02% sodium azide and 50% glycerol.

**Raised In:** Rabbit

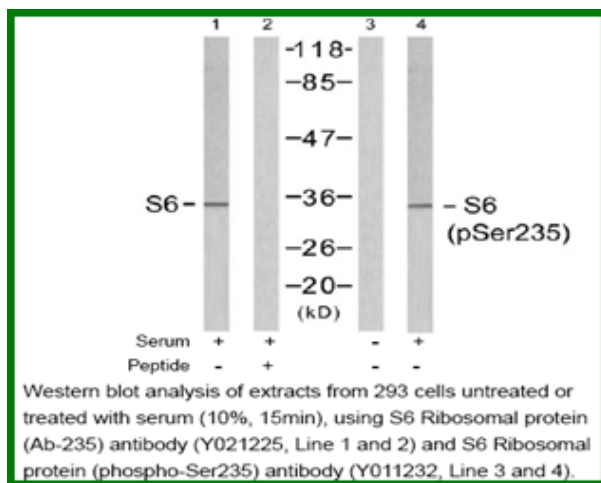
**Purity:** The antibody was affinity-purified from rabbit antiserum by affinity-chromatography using epitope-specific immunogen.

**Storage buffer:** WB: 1:500~1:1000

**Form:** Liquid

**Reference:**

McBride K, et al. (1998) Mol Cell Biol 18(9): 5073-5081. Williams AJ, et al. (2003) Plant Physiol 132(4): 2086-2097. Wilson MA, et al. (1997) Biochem J 325(Pt 1): 217-222. Arnesen T, et al. (2005) Biochem J 386(Pt 3): 433-443.



**For research use only**

Antagene, Inc. Toll Free: 1-866-964-2589, Fax: 1-888-225-1868, [info@antageneinc.com](mailto:info@antageneinc.com),  
[www.antageneinc.com](http://www.antageneinc.com)