



Met (Ab-1234) Antibody

Cat. #: ANTY021220

Species: Human, Mouse and Rat

Quantity: 100ug

Concentration: 100ug/100ul

Storage and Stability:

Store at -20°C/1 year

Immunogen:

The antiserum was produced against synthesized non-phosphopeptide derived from human Met around the phosphorylation site of tyrosine 1234 (K-E-YP-Y-S).

Specificity:

Met (Ab-1234) antibody detects endogenous levels of total Met protein.

Tested Application: WB

Application Notes: Rabbit IgG in phosphate buffered saline (without Mg²⁺ and Ca²⁺), pH 7.4, 150mM NaCl, 0.02% sodium azide and 50% glycerol.

Raised In: Rabbit

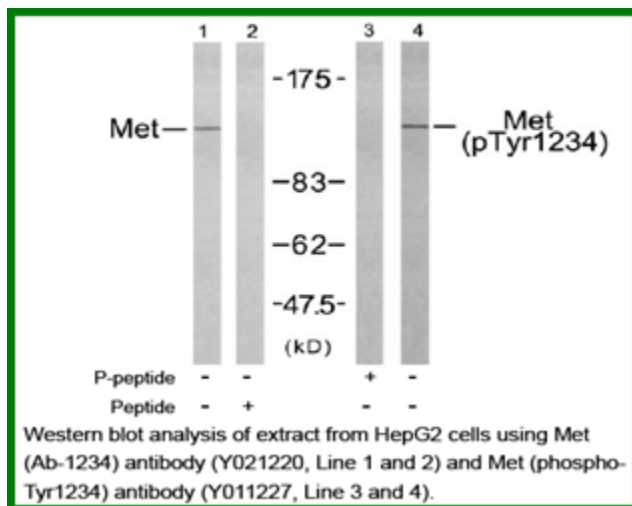
Purity: The antibody was affinity-purified from rabbit antiserum by affinity-chromatography using epitope-specific immunogen.

Storage buffer: WB: 1:500~1:1000

Form: Liquid

Reference:

Gherardi E. et al. (2003). Proc Natl Acad Sci U S A. 100(21): 12039-12044. Shiu SH. et al. (2001) Proc Natl Acad Sci U S A. 98(19): 10763-10768. Hughes AL. et al. (2001) Genome Res. 11(5): 771-780. Onuchic LF. et al. (2002) Am J Hum Genet. 70(5): 1305-1317.



For research use only

Antagene, Inc. Toll Free: 1-866-964-2589, Fax: 1-888-225-1868, info@antageneinc.com, www.antageneinc.com