



## Stathmin 1 (Ab-4) Antibody

**Cat. #:** ANTY021217

**Species:** Human, Mouse, Rat

**Quantity:** 100ug

**Concentration:** 100ug/100ul

### Storage and Stability:

Store at -20°C/1 year

### Immunogen:

The antiserum was produced against synthesized non-phosphopeptide derived from human Stathmin 1 around the phosphorylation site of serine 24 (I-L-SP-P-R).

### Specificity:

Stathmin 1 (Ab-24) antibody detects endogenous levels of total Stathmin 1 protein.

**Tested Application:** WB and IHC

**Application Notes:** Rabbit IgG in phosphate buffered saline (without Mg<sup>2+</sup> and Ca<sup>2+</sup>), pH 7.4, 150mM NaCl, 0.02% sodium azide and 50% glycerol.

**Raised In:** Rabbit

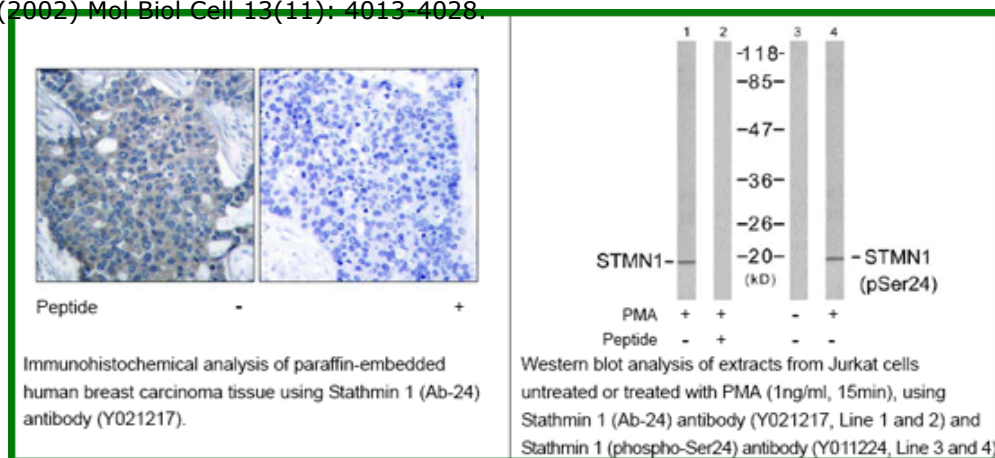
**Purity:** The antibody was affinity-purified from rabbit antiserum by affinity-chromatography using epitope-specific immunogen.

**Storage buffer:** WB: 1:500~1:1000 IHC: 1:50~1:100

**Form:** Liquid

### Reference:

Boehm M, et al. (2002) EMBO J 21(13): 3390-3401. Vadlamudi RK, et al. (2005) Mol Cell Biol 25(9): 3726-3736. Zilfou JT, et al. (2001) Mol Cell Biol 21(12): 3974-3985. Biernat J, et al. (2002) Mol Biol Cell 13(11): 4013-4028.



### For research use only

Antagene, Inc. Toll Free: 1-866-964-2589, Fax: 1-888-225-1868, [info@antageneinc.com](mailto:info@antageneinc.com), [www.antageneinc.com](http://www.antageneinc.com)